

Code: RUG-005/006/018/019/051

Important note for RUG-045/046/055
If you have purchased RUG-045, RUG-046
or RUG-055 then please install to instruction
number INS617 supplied with the uprights.

INS618

Revision 5

09/09/2015

© Harrod UK Limited

Product: No.1 Steel Rugby Posts

Pack Contents:

No.1 Steel Rugby Posts

1. 4 x FEP208 Hinge Assembly (*RUG-018/019*)
2. 4 x FEQ651 Bottom Upright (*RUG-005/006*)
2. 4 x FEQ656 Bottom Upright (*RUG-018/019*)
3. 4 x FEQ652 Top Upright (*RUG-018/005*)
3. 4 x FEQ655 Top Upright (*RUG-019/006*)
4. 2 x FEQ650 Crossbar
5. 4 x RUG-109 Ground Socket

RUG-051 Hinge assembly only

1. 4 x FEP208 Hinge Assembly

IMPORTANT PLEASE READ THE ASSEMBLY INSTRUCTIONS CAREFULLY BEFORE STARTING TO ASSEMBLE YOUR POSTS.

View of Product

Tools Required

- 1 x 24mm Spanner
- 2 x 19mm Spanners
- 1 x 17mm Spanner
- 1 x Spirit Level
- 1 x Tape Measure
- 2 x Step Ladders

IMPORTANT Assembly of these posts should not take place in windy conditions.

For safety reasons; Post Protectors must be used with all Hinged Rugby Posts to cover the hinge arrangement.

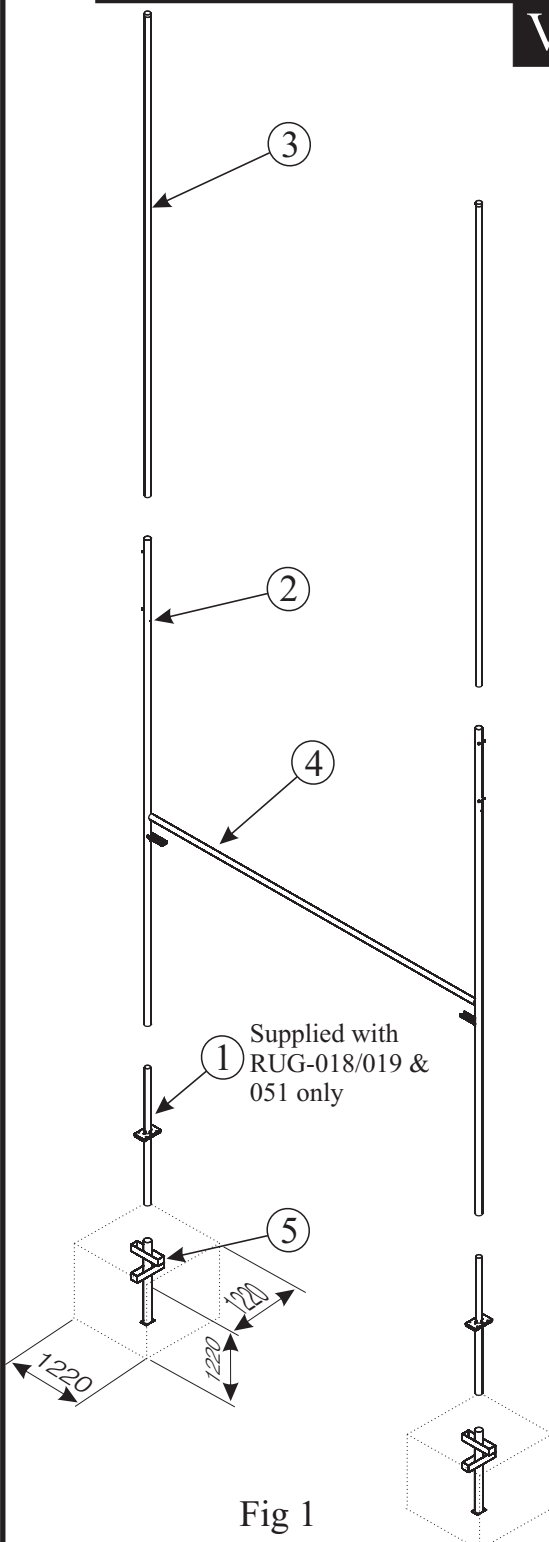


Fig 1

Important Note for RUG-051

If RUG-051 has been purchased for adapting an existing set of rugby posts, you will need to cut down your existing uprights as follows:

For sockets installed 25mm below ground level the distance from the underside of the channel to the bottom of the upright needs to be 2899mm. For sockets flush with ground level this needs to be 2874mm.

Safety Notes

- 1 A risk assessment must be carried out on the erection of Hinged Rugby and Rugby Adaptors.
- 2 Always use mechanical assistance if the Risk Assessment highlights this requirement.
- 3 Always check fasteners before use and tighten where necessary.
- 4 Periodically apply grease to hinge fixing bolts to pre-long the life the posts.
- 5 Posts should always be taken down if strong winds are forecast.

Code: RUG-005/006/018/019/051

Product: No.1 Steel Rugby Posts

Important note for RUG-045/046/055
If you have purchased RUG-045, RUG-046 or RUG-055 then please install to instruction number INS617 supplied with the uprights.

Assembly Instructions

1 Install Sockets - Dig holes 1220x1220x1220m (4ft cubed) at centres of 5689mm as shown in Fig 2. Concrete the sockets in 25mm below ground level and leave approx 100mm from top of concrete to ground level (to replace turf). Use a spirit level to make sure that the sockets are truly vertical and support until set. Replace the turf extracted when the concrete has cured (allow concrete to set before moving on to step 2).

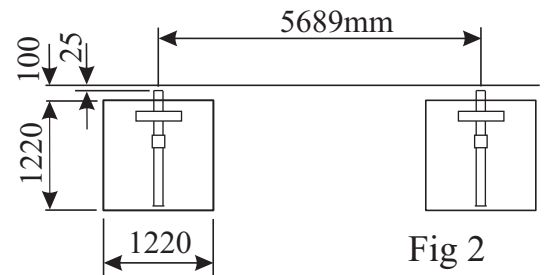
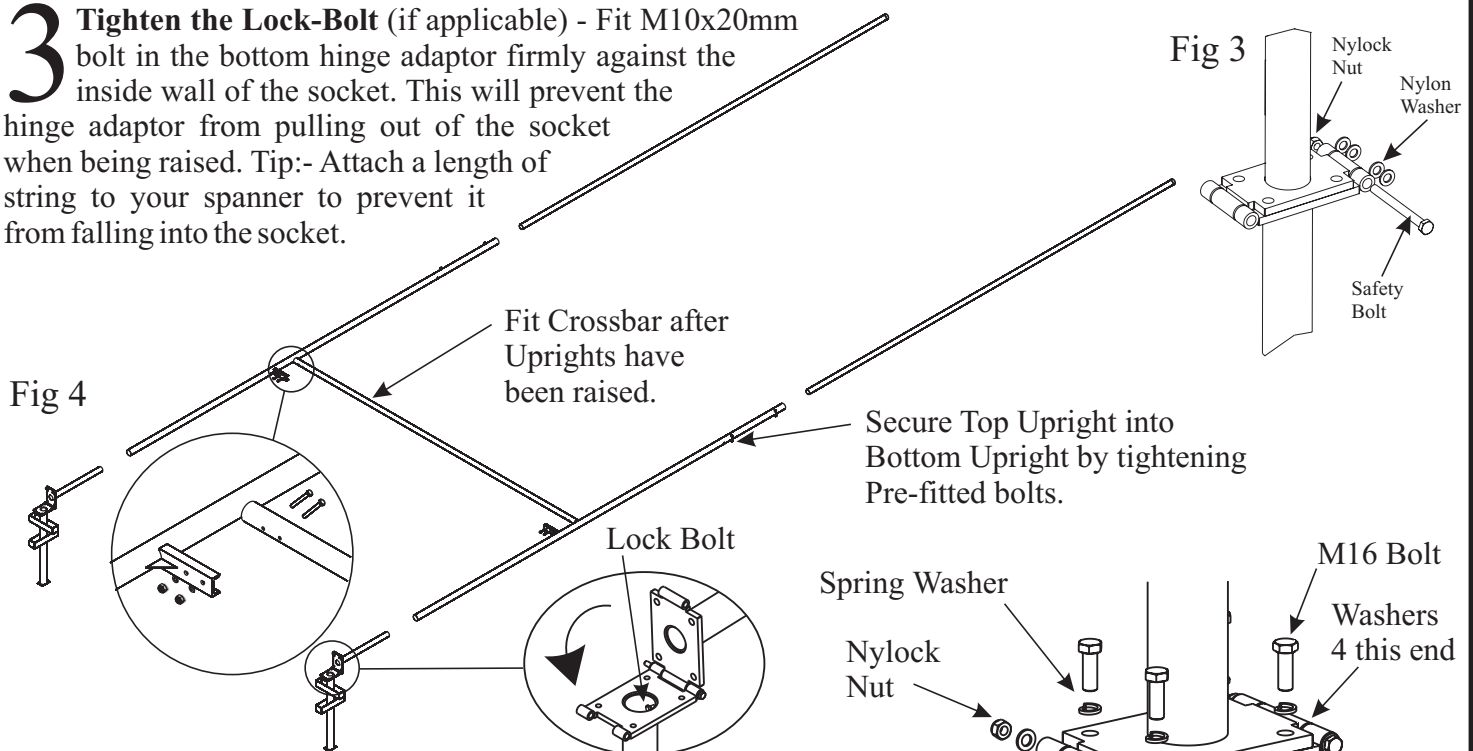


Fig 2

2 Prepare Hinge Adaptors (if applicable) - Add 1 Hinge Bolt, Nut and 4x Nylon Washers to the back of the Hinge Adaptor as shown in Fig 3, and insert the Hinge Tube into the Socket. Leave the Hinge open with the Top Tube facing in towards the pitch as shown in Fig 4. If the 2 Hinge adaptors require assembling together; ensure that there are 4 Nylon Washers on the hinge bolt separating each part of the hinge.

3 Tighten the Lock-Bolt (if applicable) - Fit M10x20mm bolt in the bottom hinge adaptor firmly against the inside wall of the socket. This will prevent the hinge adaptor from pulling out of the socket when being raised. Tip:- Attach a length of string to your spanner to prevent it from falling into the socket.



4 Prepare the Uprights - Slide the Bottom Uprights into the Hinge Assemblies (if applicable). Position the Bottom Uprights with the Crossbar Channel facing inwards, as shown in Fig 4 and then slide the Top Uprights into the Bottom Uprights and secure by tightening the pre-fixed bolts in the Bottom Uprights.

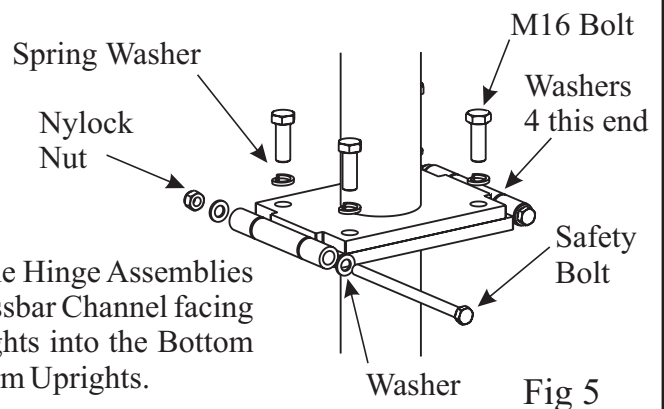
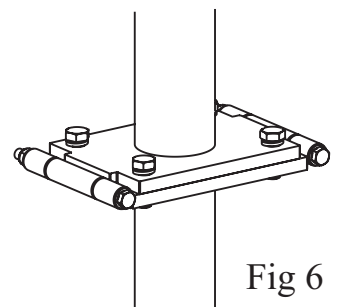


Fig 5

5 Raise The Uprights - Using mechanical assistance, lift each post (one at a time) into the vertical position and for non-hinging posts: drop the bottom upright into the socket. For hinging posts: slide the Safety Bolt with Washer through the hinge assembly and secure with a Washer and Nylock Nut as shown in Fig 5. Finally bolt the hinge plates together with the 4 M16 Bolts and Washers as shown in Fig 5 & 6. Do not let go of the posts until all the bolts are secure. Repeat for the other posts.



6 Fit The Crossbar - Using a step ladder at each post, lift the crossbar into position and securely bolt it onto the top of the channel attached to the uprights with the fasteners supplied with the uprights, see detail in Fig 4

Fig 6

ADDITIONAL MAINTENANCE: For smoother operation and to prevent rust periodically grease hinge.



setting the standard leading the field

Harrod UK Ltd
Pinbush Road, Lowestoft, Suffolk,
NR33 7NL
Telephone: ++44 (0)1502 583515
Fax +44 (0) 1502 582456
Email: sales@harrod.uk.com
www.harrod.uk.com

Hinged Post Assembly Roller ©



© Copyright Harrod UK 2008
This product is protected by Design Right

The Hinged Post Assembly Roller allows you to safely erect and dismantle a set of hinged posts in a controlled manner. Designed to be mounted onto an appropriate tractor using two heavy duty 'U' Bolt brackets, the upright rolls along the device with the aid of the tractor roll bar before being lifted off by a suitable number of persons (the tractor must ideally be fitted with an angled or adjustable roll bar, brackets will fit up to a 76mm square bar).

A minimum of two people should always oversee the safe erection or dismantling of the rugby posts. Never allow the tractor's speed to exceed walking pace; we recommend that the tractor moves no faster than 3mph.

The Hinged Post Assembly Roller is manufactured from steel and fitted with a rubber roller, a quick release webbed safety strap and two 'U' bolt brackets.

The device is designed for use with hinged uprights only, we do not recommend the use of the Hinged Post Assembly Roller on socketed uprights.

3.4kg each

RUG-002 Hinged Post Assembly Roller
Millennium Rugby Posts being assembled at Twickenham Stadium

RUG-002



MOVIE DOWNLOADS



Hinged Post Assembly Roller

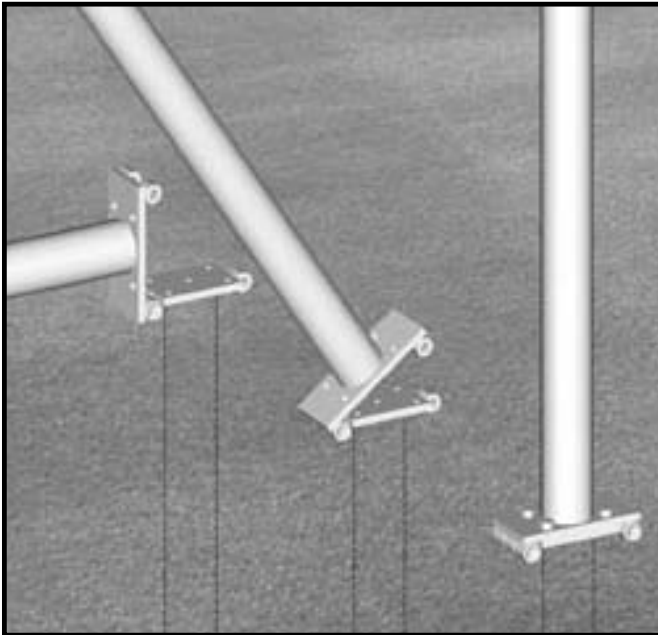
A short video demonstration of the hinged post assembly roller

Watch the demonstration video at

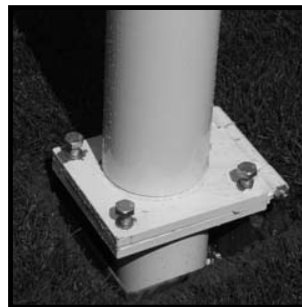
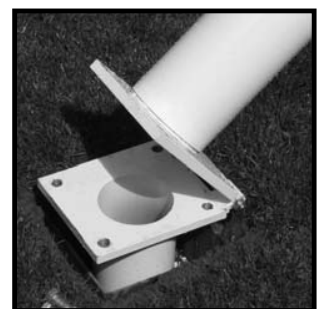
<http://www.harrod.uk.com/Products.aspx?id=951>

All products available through your current Harrod UK distributor

Hinged Adaptors



Hinged Adaptor Visual Diagram



Hinged Adaptors

Hinged adaptors are designed to convert standard socketed rugby posts to a hinged model, the upright will require tailoring to size to ensure the correct crossbar height is still achieved.

Harrod UK offer a range of hinged adaptors to suit many types of uprights.

Hinge Adaptors for No.1 Steel Rugby Posts
124.00 kg per set

RUG-051

Hinge Adaptors for Aluminium Rugby Posts
87.50 kg per set

RUG-052

Hinge Adaptors for No.2a Steel Rugby Posts
44.00 kg per set

RUG-053

Hinge Adaptors for No.3 Steel Rugby Posts
34.00 kg per set

RUG-054

Hinge Adaptors for Heavy Duty Steel Rugby Posts
89.00 kg per set

RUG-055

All products available through your current Harrod UK distributor