

## Pack Contents:

### No2 Steel Rugby Posts

1. 4 x FEP211 Hinge Assembly (*RUG-011 only*)
2. 4 x FEQ664 Bottom Upright (*RUG-011*)
2. 4 x RUG-105 Bottom Upright (*RUG-007*)
3. 1 x RUG-101 Pair of Crossbars
4. 4 x RUG-107 Ground Socket
5. 4 x RUG-106 Top Upright

### RUG-053 No2 Hinge Adaptor Only

1. 4 x FEP211 Hinge Assembly

### No3 Steel Rugby Posts

1. 4 x FEP223 Hinge Assembly (*RUG-009 only*)
2. 4 x FEQ666 Upright (*RUG-009*)
2. 4 x RUG-100 Upright (*RUG-008*)
3. 1 x RUG-101 Pair of Crossbars
4. 4 x RUG-102 Ground Socket

### RUG-054 No3 Hinge Adaptor Only

1. 4 x FEP223 Hinge Assembly

## View of Product

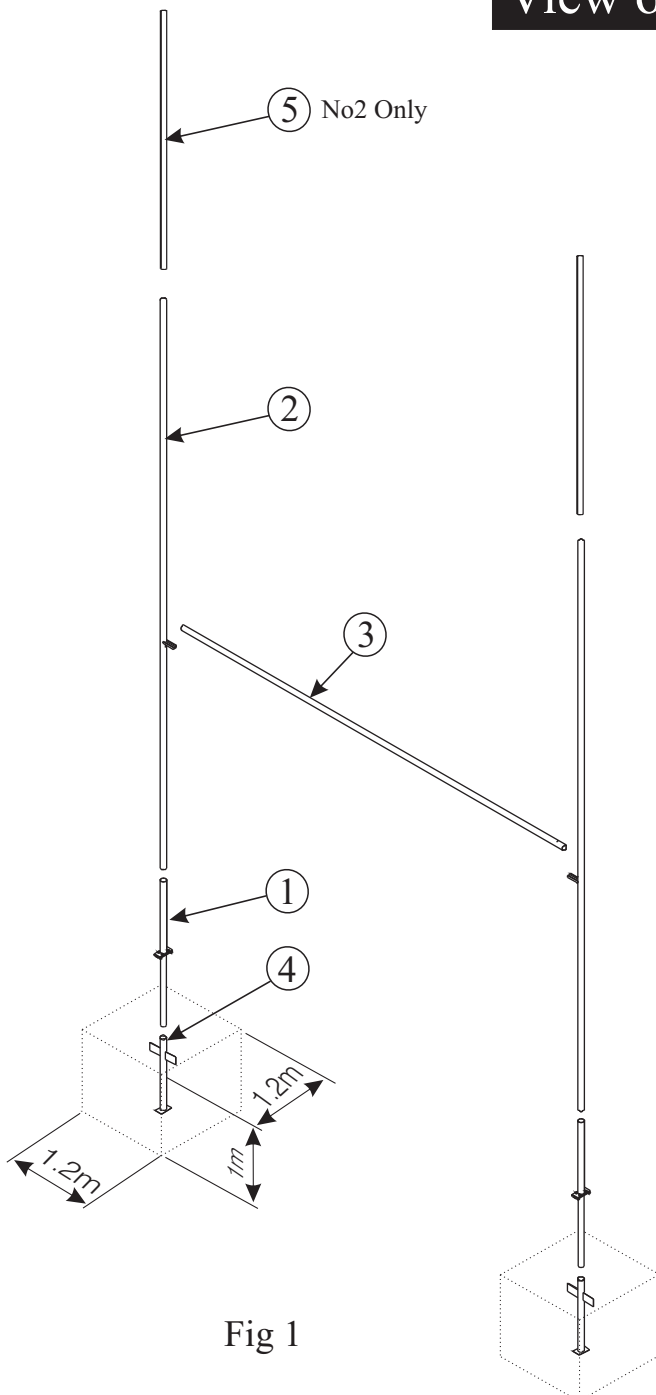


Fig 1

### Tools Required

- 1 x 22mm Spanner
- 2 x 19mm Spanners
- 2 x 17mm Spanners
- 1 x Spirit Level
- 1 x Tape Measure
- 2 x Step Ladders

**IMPORTANT:** Please read the assembly instructions carefully before starting to assemble your posts

### Important Note for RUG-053 & RUG-054

If RUG-053 or RUG-054 have been purchased for adapting an existing set of rugby posts, you will need to cut down your existing uprights as follows:

For sockets installed 25mm below ground level the distance from the underside of the channel to the bottom of the upright needs to be 2925mm. For sockets flush with ground level this needs to be 2900mm.

### Safety Notes

- 1 A risk assessment must be carried out on the erection of Hinged Rugby and Rugby Adaptors.
- 2 Always use mechanical assistance if the Risk Assessment highlights this requirement.
- 3 Always check fasteners before use and tighten where necessary.
- 4 Periodically apply grease to hinge fixing bolts to pre-long the life the posts.
- 5 Posts should always be taken down if strong winds are forecast.
- 6 Post Protectors must be used with all Hinged Rugby Posts to cover the hinge arrangement.

Code: No.2:RUG-007/011/053 No.3:RUG-008/009/054

Product: No.2 and No.3 Steel Rugby Posts

## Assembly Instructions

**1 Install Sockets** - Dig holes 1.2x1.2x1.1m deep at centres of 5670mm for No2 or 5664mm for No3 posts, as shown in Fig 2. Concrete the sockets in 25mm below ground level and leave approx 100mm from top of concrete to ground level (to replace turf). Use a spirit level to make sure that the sockets are truly vertical and support until set. Replace the turf extracted when the concrete has cured (allow concrete to set before moving on to step 2). Note: minimum concrete required 1.2x1.2x1m.

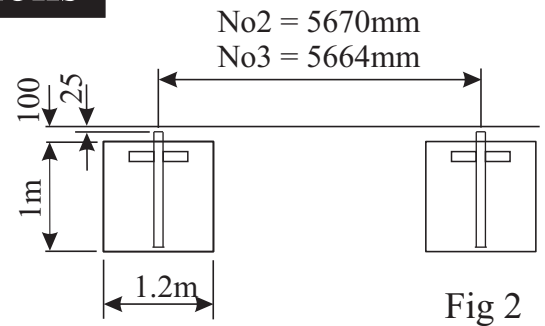


Fig 2

**2 Prepare Hinge Adaptors** (if applicable) - Add safety bolt, Nylon Washers & Nut to back of adaptor as shown in Fig 3, and insert the Hinge Tube into the Socket. Leave the Hinge open with the Top Tube facing in towards the pitch as shown in Fig 3a.

Fig 3

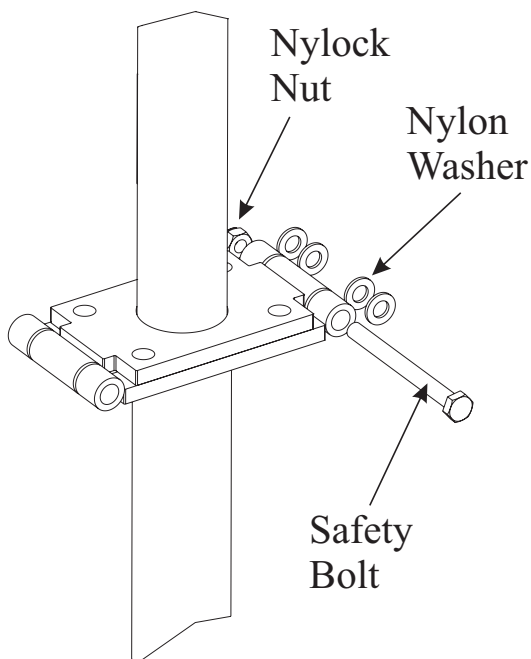
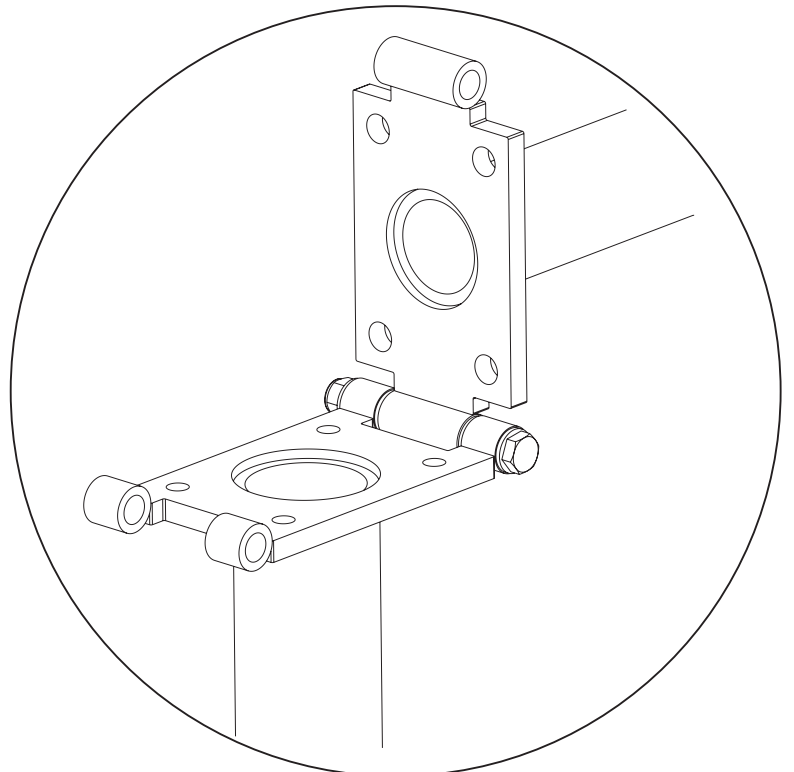


Fig 3a



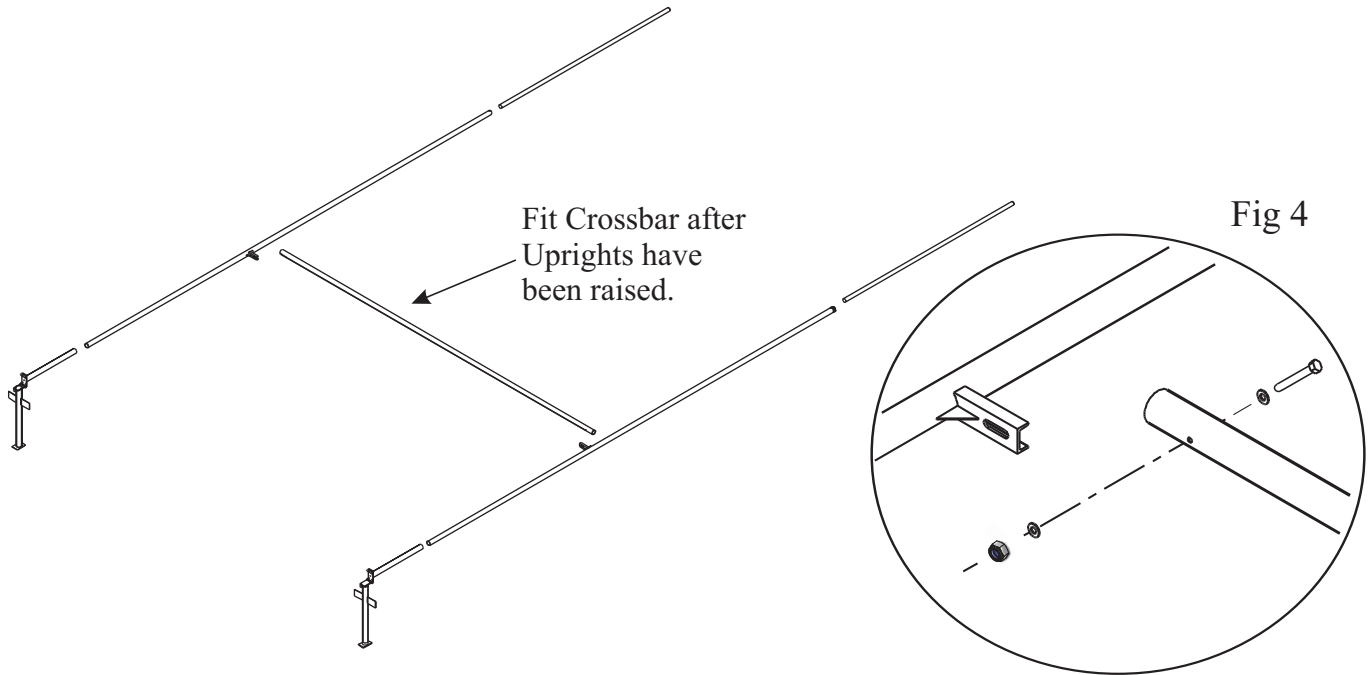
**ADDITIONAL MAINTENANCE:** For smoother operation and to prevent rust periodically grease hinge.

Code

No.2:RUG-007/011/053 No.3:RUG-008/009/054

Product:

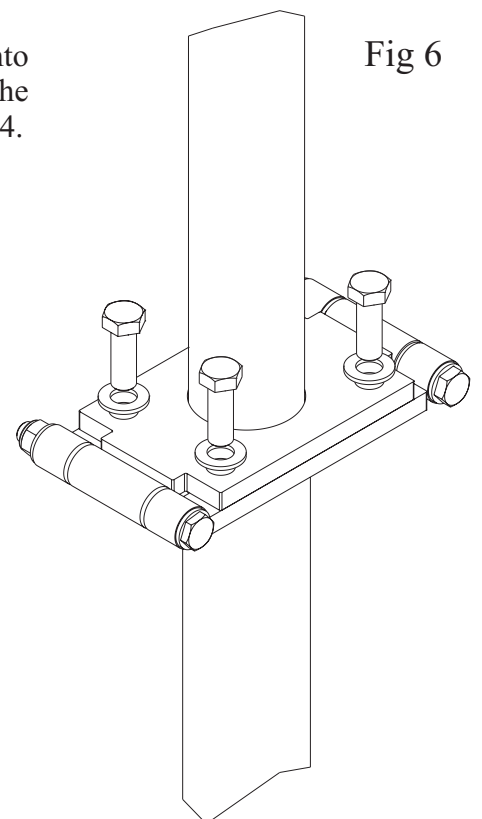
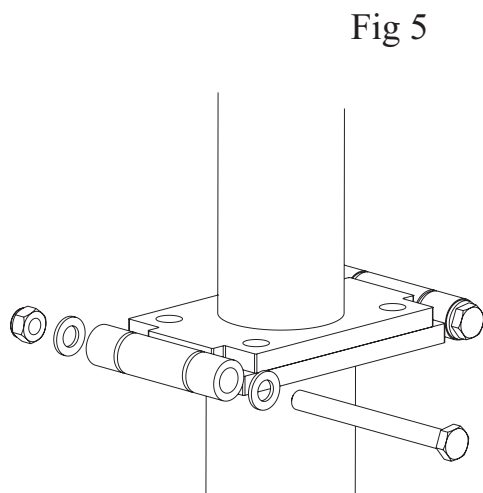
No.2 and No.3 Steel Rugby Posts



**3 Prepare the Uprights** - Slide the Bottom Uprights into the Hinge Assemblies (if applicable). Position the Bottom Uprights with the Crossbar Channel facing inwards, as shown in Fig 4 and then slide the Top Uprights into The Bottom Uprights (if applicable).

**4 Raise the Upright** - Lift each post (one at a time) into the vertical position and for non-hinging posts: slide the bottom upright into the Socket. For hinging posts: slide the Safety Bolt with through the hinge assembly and secure with the Nylock Nut as shown in Fig 5. Finally bolt the hinge plates together with the 4 M14 bolts and Washers as shown in Fig 6. **Do not let go of the posts until all the bolts are secure.** Repeat for the other post.

**5 Fit the Crossbar** - Using a step ladder at each post, lift the crossbar into position and securely bolt it onto the top of the channel attached to the uprights with the fasteners supplied with the crossbars, see detail in Fig 4.





setting the standard leading the field

Harrod UK Ltd  
Pinbush Road, Lowestoft, Suffolk,  
NR33 7NL  
Telephone: ++44 (0)1502 583515  
Fax +44 (0) 1502 582456  
Email: sales@harrod.uk.com  
www.harrod.uk.com

# Hinged Post Assembly Roller ©



© Copyright Harrod UK 2008  
This product is protected by Design Right

The Hinged Post Assembly Roller allows you to safely erect and dismantle a set of hinged posts in a controlled manner. Designed to be mounted onto an appropriate tractor using two heavy duty 'U' Bolt brackets, the upright rolls along the device with the aid of the tractor roll bar before being lifted off by a suitable number of persons (the tractor must ideally be fitted with an angled or adjustable roll bar, brackets will fit up to a 76mm square bar).

A minimum of two people should always oversee the safe erection or dismantling of the rugby posts. Never allow the tractor's speed to exceed walking pace; we recommend that the tractor moves no faster than 3mph.

The Hinged Post Assembly Roller is manufactured from steel and fitted with a rubber roller, a quick release webbed safety strap and two 'U' bolt brackets.

The device is designed for use with hinged uprights only, we do not recommend the use of the Hinged Post Assembly Roller on socketed uprights.

3.4kg each

**RUG-002**

**RUG-002 Hinged Post Assembly Roller**  
Millennium Rugby Posts being assembled at Twickenham Stadium



**MOVIE DOWNLOADS**



**Hinged Post Assembly Roller**

A short video demonstration of the hinged post assembly roller

Watch the demonstration video at

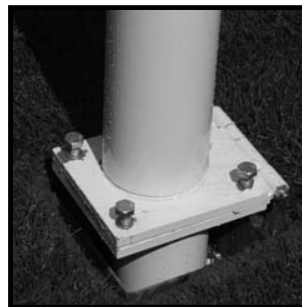
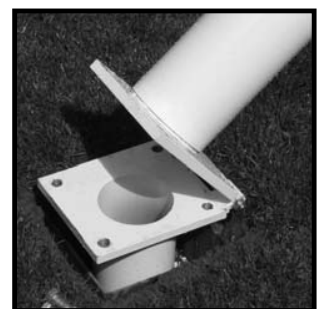
<http://www.harrod.uk.com/Products.aspx?id=951>

All products available through your current Harrod UK distributor

# Hinged Adaptors



Hinged Adaptor Visual Diagram



## Hinged Adaptors

Hinged adaptors are designed to convert standard socketed rugby posts to a hinged model, the upright will require tailoring to size to ensure the correct crossbar height is still achieved.

Harrod UK offer a range of hinged adaptors to suit many types of uprights.

Hinge Adaptors for No.1 Steel Rugby Posts  
124.00 kg per set

**RUG-051**

Hinge Adaptors for Aluminium Rugby Posts  
87.50 kg per set

**RUG-052**

Hinge Adaptors for No.2a Steel Rugby Posts  
44.00 kg per set

**RUG-053**

Hinge Adaptors for No.3 Steel Rugby Posts  
34.00 kg per set

**RUG-054**

Hinge Adaptors for Heavy Duty Steel Rugby Posts  
89.00 kg per set

**RUG-055**

All products available through your current Harrod UK distributor