

## Pack Contents:

1. 1 x L/H SIDE FRAME	(FEP038)	1 x SEAT SUPPORT FRAME (4M)	(FEP053)
2. 1 x R/H SIDE FRAME	(FEP037)	1 x SEAT SUPPORT FRAME (5M)	(FEP055)
		1 x SEAT SUPPORT FRAME (6M)	(FEP057)
3. BENT SUPPORTS	(FEP049)	10. Seat Support	(PEQ044)
1 x Bent Supports	(PEQ049)	11. End Support	(PEQ052)
4. BUCKET SEATS (Pair)	(FEP045/046)	12. BACK SUPPORTS	(4/6M) (FEP079)
A-3 Stadium Seat (Red)	(PLA049)	1 x BACK SUPPORTS	(5M) (FEP077)
A-3 Stadium Seat (Blue)	(PLA044)	950mm Back Support	(PEQ079)
A-3 Stadium Seat (Green)	(PLA043)		
1 x CROSSBAR & BACK BAR (4M)	(FEP044)	13. 1 x SEAT SUPPORT	(4M) (FEP054)
1 x CROSSBAR & BACK BAR (5M)	(FEP041)	1 x SEAT SUPPORT	(5M) (FEP058)
1 x CROSSBAR & BACK BAR (6M)	(FEP040)	1 x SEAT SUPPORT	(6M) (FEP056)
5. 1 x Backbar		1 x BOLTS PACK	(4M) (FPK040)
6. 1 x Crossbar		1 x BOLTS PACK	(5M) (FPK041)
7. 2 x Retaining bar		1 x BOLTS PACK	(6M) (FPK042)
		(Packed with Seat Support Frames)	
8. RETAINING TUBES	(FEP047)	30. Aluminium Team Shelter Sockets	(FEQ794)
Retaining Tube	(PEQ078)		
9. PET BACK SHEET	(PLA047)		

	4m Shelter	5m Shelter	6m Shelter	Part No.
14. M8 Nutcap	4	4	4	(CAP951)
15. 32mm Cover Cap (Top)	3	4	5	(CAP096)
16. 32mm Cover Cap (Bottom)	3	4	5	(CAP097)
17. M8 Hex Nut	4	4	4	(BOL400)
18. M8 Nyloc Nut	39	48	57	(BOL402)
19. M8 Washer STST	9	12	15	(BOL715)
20. M8 Skiffy Washer	48	56	64	(BOL722)
21. M8 * 20 Set Screw S/S	4	4	4	(BOL546)
22. M8 * 80 Hex Bolt S/S	30	36	42	(BOL472)
23. M8 * 40 Hex HD Bolt S/S	6	8	10	(BOL520)
24. M8 * 90 Hex Bolt S/S	3	4	5	(BOL450)
25. 14G 60mm Self Tapping Screw	8	10	12	(BOL771)
26. 16mm Round Insert	5	6	7	(CAP095)
27. Crossbar Cap	2	2	2	(PEP050)
28. 10G * 1/2" Self Tapping Screw	4	4	4	(BOL782)
29. 10mm T-Handle Nut Driver	1	1	1	(FAS005)

## General Info

IMPORTANT NOTES

At least THREE people are required to safely assemble this shelter.

This shelter must be assembled on a flat surface.  
Failure to do this may result in bolt hole misalignment.

If the shelter is to be bolted into concrete, there should be at least 100kg of concrete at each anchor point (Eg: 350x350x350mm Cube).

WHEN THE SHELTER IS FULLY ASSEMBLED IT MUST BE ANCHORED TO PREVENT MOVEMENT AND TOPPLING. PLEASE SEE YOUR DISTRIBUTOR FOR ANCHORING OPTIONS.

Please read these assembly instructions carefully before starting to assemble your shelter.

TOOLS REQUIRED

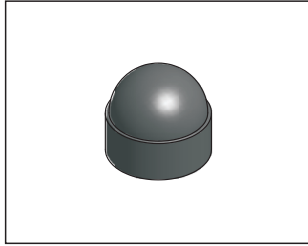
1 x T-Handle Nut Driver (included)  
1 x Mallet  
1 x Ratchet with 13mm socket  
2 x 13mm Spanners  
1 x Phillips HD Screw Driver/Drill Bit  
Silicone Lubricant Spray/Fairy Liquid

Code: SHE-011/016/021/026/031/036/041/046

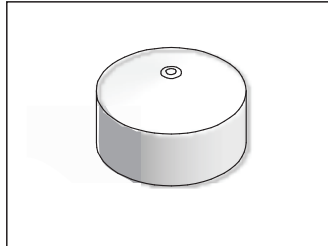
Product: Premier Socketed Curved Team Shelter

### Parts Identification

14. (CAP951)



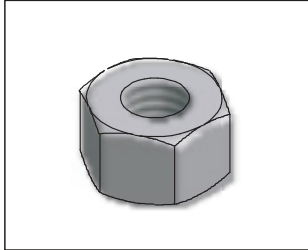
15. (CAP096)



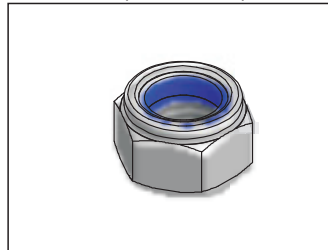
16. (CAP097)



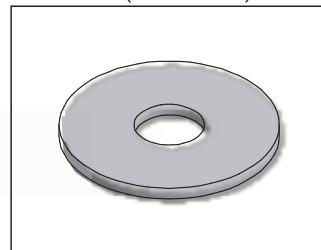
17. (BOL400)



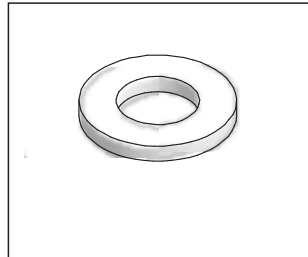
18. (BOL402)



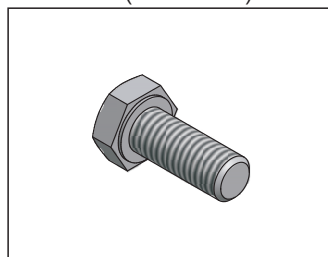
19. (BOL715)



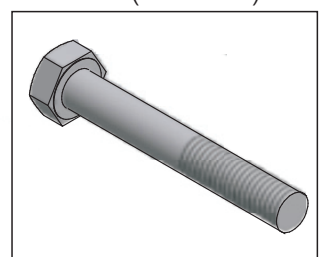
20. (BOL722)



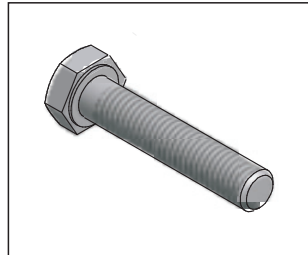
21. (BOL546)



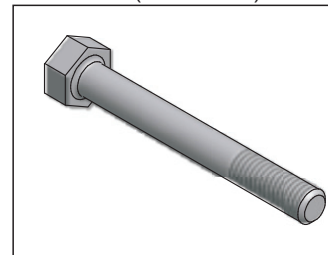
22. (BOL472)



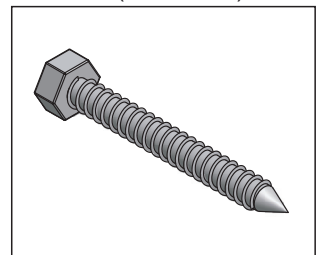
23. (BOL520)



24. (BOL450)



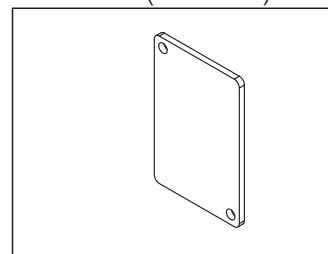
25. (BOL771)



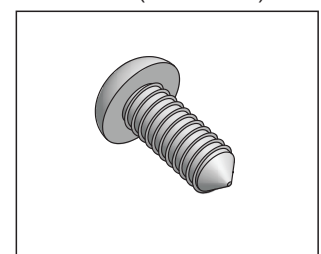
26. (CAP095)



27. (PEP050)



28. (BOL782)



29. (FAS005)



## Assembly Instructions

### IMPORTANT

All bolts should be hand tightened where possible, until the shelter has been fully assembled, then fully tighten.

1.) Attach the backbar (5) by sliding in-between the brackets on the sideframes and line up the holes. You will need 3 people for this as the sideframes need to be held with the uprights face down on the floor, as shown in Figure 2. When the backbar is in position, use 2 x BOL472 (22) to attach to the sideframes (Figure 1). Fix with a plastic washer (20) both sides and a nylock nut (18). When doing so, make sure the backbar is orientated so that the foot plate in the middle is pointing up towards the sky (Figure 2).

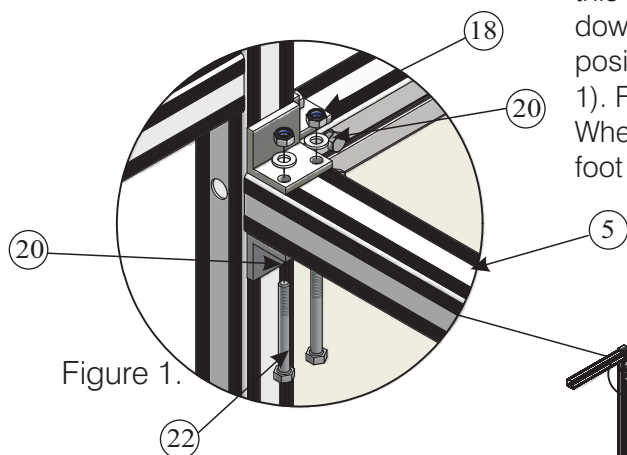


Figure 1.

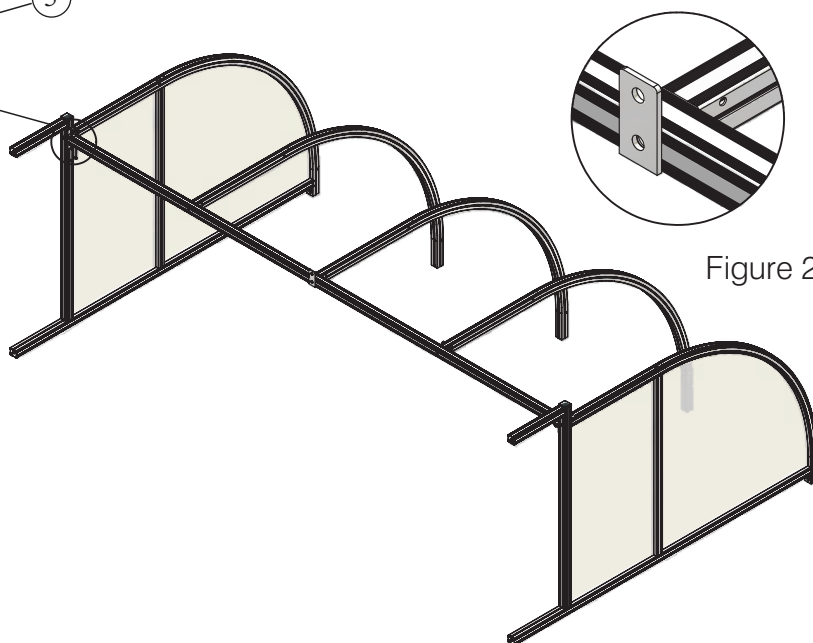


Figure 2.

2.) Attach the bent supports (3) to the backbar by using BOL771 (25). Locate the holes in the underside of the backbar and line up the screw port within the extrusion of the supports. With 1-2 people holding the bent supports in position the other person can screw the self tapping bolt in place. This will require a 10mm extension tool or the T-Handle nut driver (30) supplied with the shelter. Make sure when doing so that the bolt is straight as this is cutting the thread at the same time. This is made easier by ensuring the bent support is square with the backbar (See Figure 3).

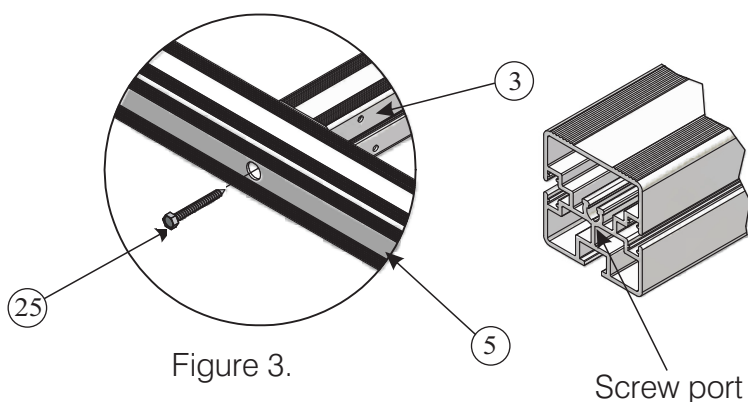


Figure 3.

Screw port

3.) Attach the back supports (12) between the bent supports (3) by attaching with 2 x BOL472 (22) (Figure 4). Fix with a skiffy washer (20) on both sides and a nylock nut on the other side. Make sure that the bolts are only finger tight so that there is still some movement on the bracket. Attach the back supports to the sideframe using a skiffy washer (20) and BOL546 (21) as shown in figure 6.

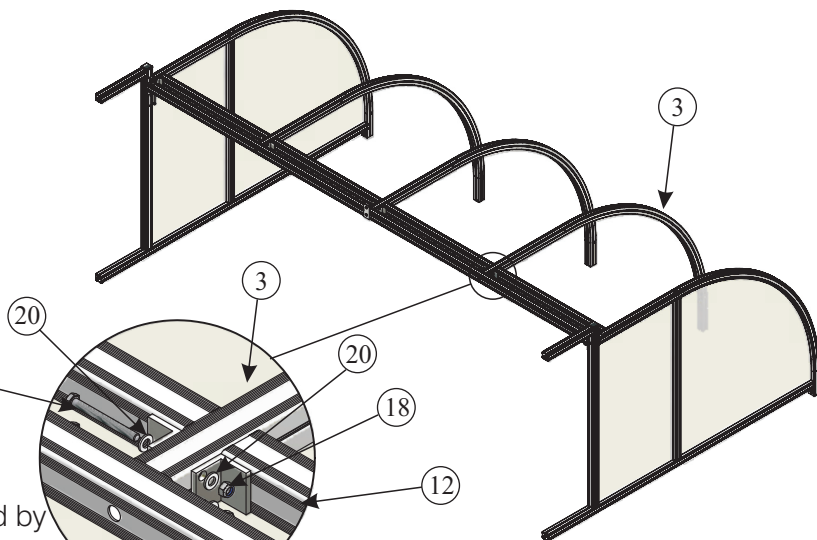


Figure 5.

4.) Attach the retaining bars (7) from one end by sliding through the holes located in the sideframe and the bent supports (3). This will require 2 people as one will need to push the bars through while the other will need to slide the bars through the retaining tubes (8) to space the sections at the correct length (Figure 7). Once the retaining bar is all the way through there should be approx 15mm protruding either side. This allows the bar to be fixed and tightened at each end. This is done by placing a skiffy washer (20) on first and then fixing with BOL400 (17). Hand tighten this at first as you will need to allow movement between the sections when fitting the plastic later.

Figure 4.

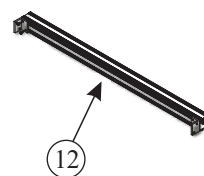


Figure 6.

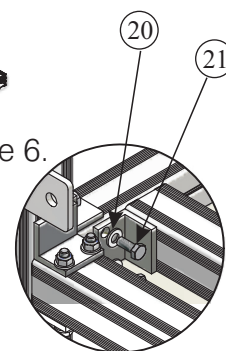


Figure 7.

*Note: CAP951 (14) needs to be fitted once the retaining bars have been tightened and the shelter is complete (Figure 7).*

5.) The shelter now needs to be tilted into the upright position (Figure 8) and placed into the sockets. The safest way to do this is to have one person support each sideframe whilst another supports the bent supports. Now the main structure is assembled the seat support frames (10) need to be fixed to the bent supports (3). This is done by sliding 2 x M8\*40mm bolts (23) into the bolt track of the bent supports and fixing the frames to the supports. Line up the bolts with the holes in the support frame then fit BOL715 (19) and BOL402 (18) (Figure 9). Put these on finger tight at first until the seats are positioned correctly as this will allow some movement needed to fix the seats.

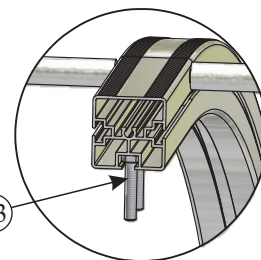


Figure 8.

*Note: When you come to tighten up the nuts, make sure the bottom of the seat frame is sitting flush on the floor.*

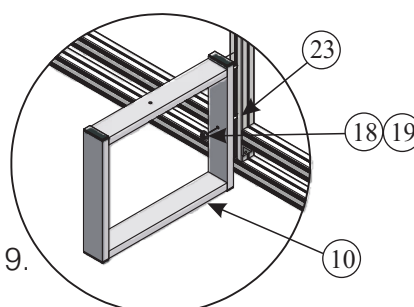


Figure 9.

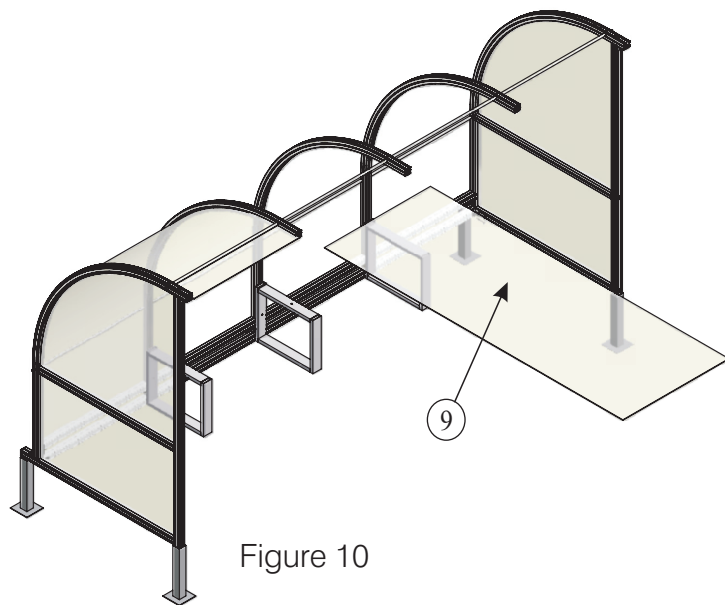


Figure 10

6.) At this point the back sheets (9) need to be slid into place. Again this is a 3 person task, one person will need to hold and support the weight of the sheet and the other 2 to guide and push the sheet into the recess into position. The sheets need to slide into the recess of the extrusion of the bent supports, where the rubber is located (shown more clearly in figure 11). *Note: It is recommended to use some kind of silicone lubricant to aid the plastic sheets to slide in.* The sheet must slide in square, otherwise it will grip on the rubber and wont slide in. As the plastic sheet nears the bottom, make sure you line it up with the back support slot so when it reaches the bottom it will locate in position.

*Note: There will be an overhang of approx 13mm at the top of the support.*

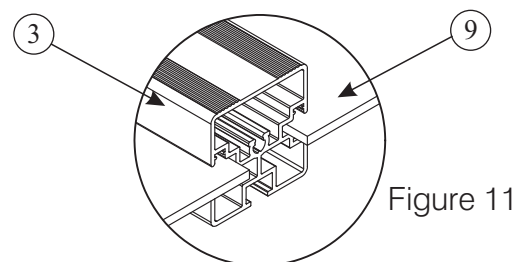


Figure 11

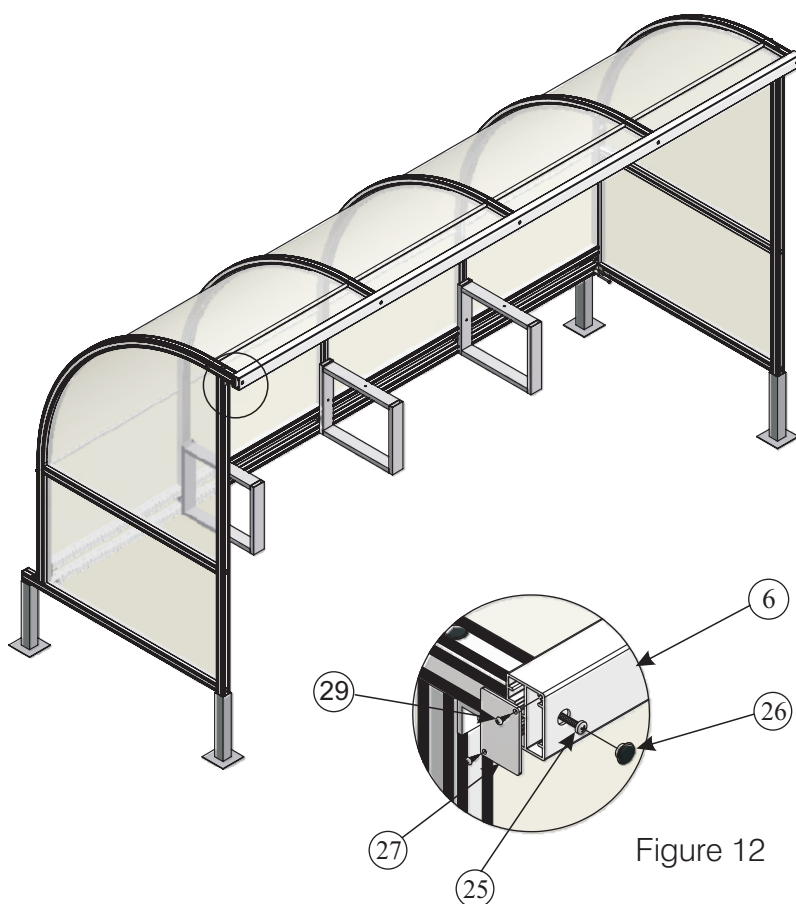


Figure 12

7.) Once all the plastic is in place the crossbar (6) needs to be fixed into position. Attach the crossbar using the self tapping screws (25), locate the holes in the crossbar and line the holes up with the screw port in the bent supports. It is best to fix in the end screws first so that the crossbar is supported at either side. You then need to tighten up the middle 3 screws gradually as the crossbar pulls onto the face of the bent supports. *You will need a 10mm deep drive socket/FAS005 (30) for this.* When doing so make sure the plastic sheets are lined up to fit into the recess of the crossbar. This is important as this will hinder the screws from pulling into the supports.

When the crossbar is fitted tightly you can finish it off by inserting the round caps (26) into the front of the crossbar and the end caps (27) in either end of the crossbar by using the 10g self tapping screws (29) (Figure 12).



Code: SHE-011/016/021/026/031/036/041/046

Product: Premier Socketed Curved Team Shelter

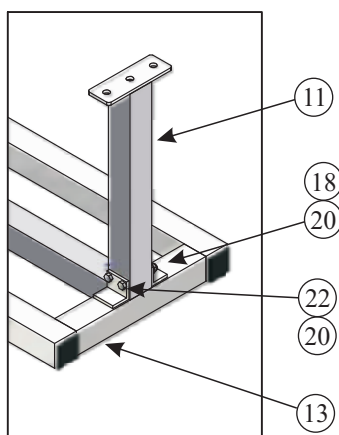


Figure 13.

8.) Attach the end seat supports (11) to the horizontal seat support (13) by fixing through the brackets with BOL472 (22) and fixing with a skiffy washer and nylock nut (Figure 13).

*Note: The foot plates on the end supports can be used as additional anchor points if in windy or exposed conditions.*

9.) To attach the seats (4) to the horizontal support line up the holes in the seat with the holes in the support and use BOL472 (22) and BOL722 (20) to fix through. Fix tightly using BOL402 (18).

*Note: When the seats are in position within the shelter finish off by inserting the seat plugs (packed with the seats), to cover the bolt heads. These may need to be knocked in using a rubber mallet.*

Figure 14.

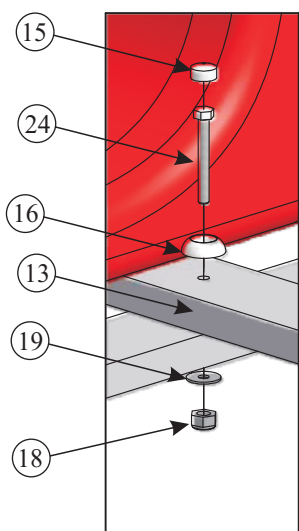
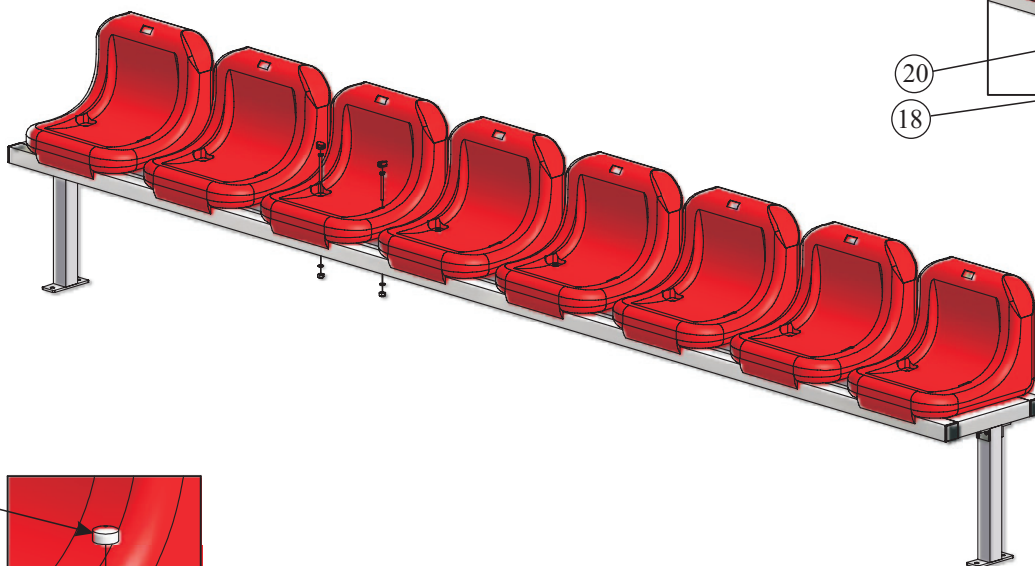
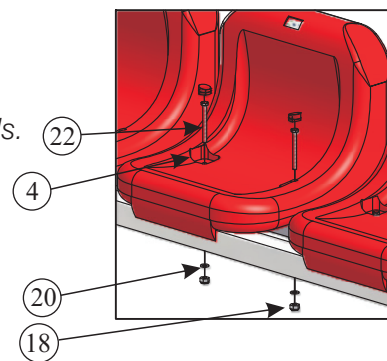


Figure 15.

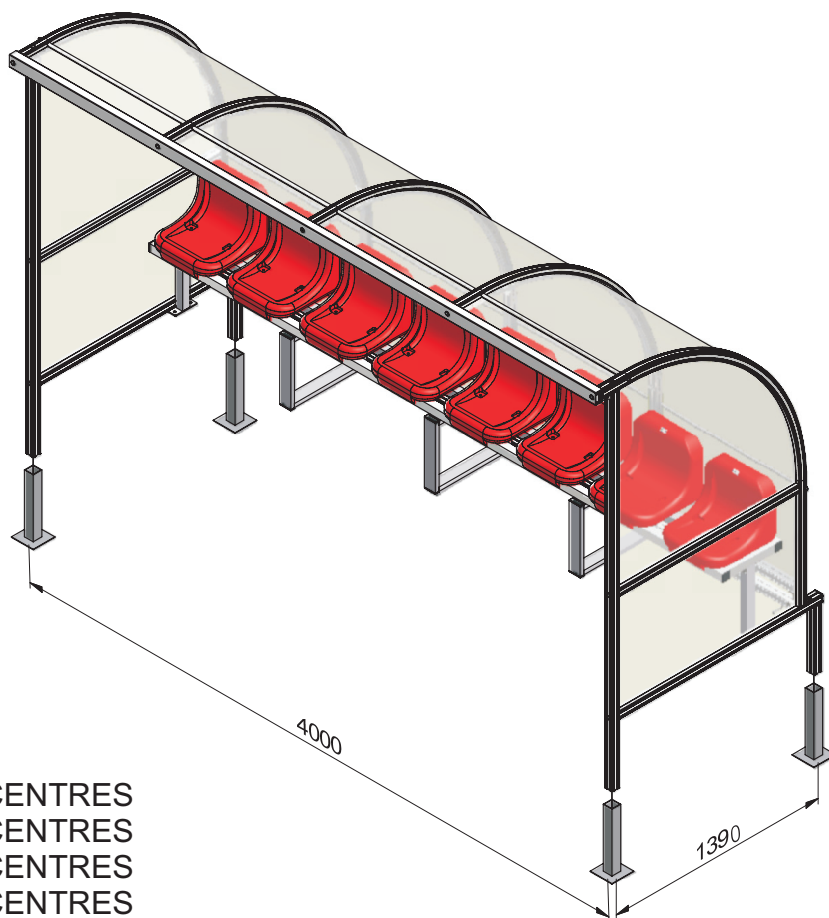
10.) Line up the holes in the horizontal seat support (13) with the holes in the top of the individual seat support frames (10). You will notice that the seat support will be a 'snug' fit within the shelter. Insert BOL450 (24) through the hole in CAP097 (16) and then insert through the hole and attach BOL715 (19) and BOL402 (18) on the bottom (Figure 15). Tighten all 3 bolts and then push CAP096 (15) into the top of CAP097 to cover the bolt head.

*Note: At this stage all the bolts that have previously not been tightened will now need to be tightened up.*

**Code:** SHE-011/016/021/026/031/036/041/046

**Product:** Premier Socketed Curved Team Shelter

### View of Shelter



1M SHELTER = 1000mm SOCKET CENTRES  
4M SHELTER = 4000mm SOCKET CENTRES  
5M SHELTER = 5000mm SOCKET CENTRES  
6M SHELTER = 6000mm SOCKET CENTRES

#### Digging the Hole:

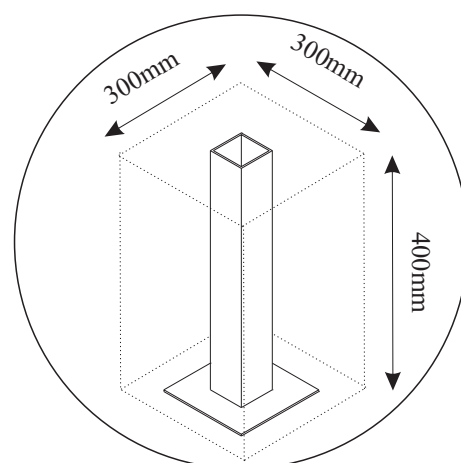
- Mark out 4 socket points using the dimensions shown above and around these points draw a 300x300mm square. Dig the square to 400mm deep.

#### Placing the Socket:

- Place each socket into the middle of each hole. Once the shelter is assembled up to stage 5 (Pg 4) lift it into the sockets. This will enable the sockets to be as accurate as possible.

#### Concreting the Socket:

- As the uprights of the shelter sit on the bottom of the sockets it is crucial that sockets are concreted in level. Once happy with the positioning of the shelter and sockets carefully fill each hole with concrete. Do not remove the shelter as this holds the sockets in position.



Concrete block details