

Pack Contents:

1) 1 x L/H SIDE FRAME PACK	(FEP042)	11) 1 x SEAT SUPPORT FRAME	(FEP060)
2) 1 x R/H SIDE FRAME PACK	(FEP043)	1 x Seat Support Frame	(PEQ088)
3) 1 x BUCKET SEATS (Pair) Green	(FEP058)	1 x FPK043 BOLTS PACK (Packed with FEP060)	
1 x BUCKET SEATS (Pair) Red	(FEP045)	12) 8 x M8 Nyloc Nut	(BOL402)
1 x BUCKET SEATS (Pair) Blue	(FEP046)	13) 4 x M8 Hex Nut	(BOL400)
1 x CROSSBAR & BACK BAR	(FEP061)	14) 2 x M8*110 Hex Bolt BZP	(BOL442)
4) 1 x Backbar	(PEP071)	15) 6 x M8*80 Hex Bolt S/S	(BOL472)
5) 1 x Crossbar	(PEP072)	16) 4 x M8*40 Hex Head Bolt S/S	(BOL520)
6) 2 x Retaining Bar	(APP074)	17) 2 x 14G 60mm Self Tapping Screw	(BOL771)
7) 1 x Back Support	(PEQ079)	18) 4 x M8*20 Set Screw S/S	(BOL546)
8) 2 x Retaining Tube	(PEQ078)	19) 20 x 8mm Skiffy Washer	(BOL722)
9) 1 x PETG BACK SHEET	(PLA047)	20) 4 x 0.5IN*10G Pan HD Self Tap	(BOL782)
10) 1 x SEAT SUPPORT	(FEP062)	21) 2 x M8 Nutcap	(CAP951)
1 x Horizontal Seat Support	(PEQ152)	22) 2 x 16mm Round Insert	(CAP095)
		23) 1 x 10mm T-Handle Nut Driver	(FAS005)
		24) 2 x Crossbar cap	(PEP050)
		25) 4 x M8 Washer S/S	(BOL715)

View of Shelter**IMPORTANT NOTES**

At least two people are required to safely assemble this shelter.

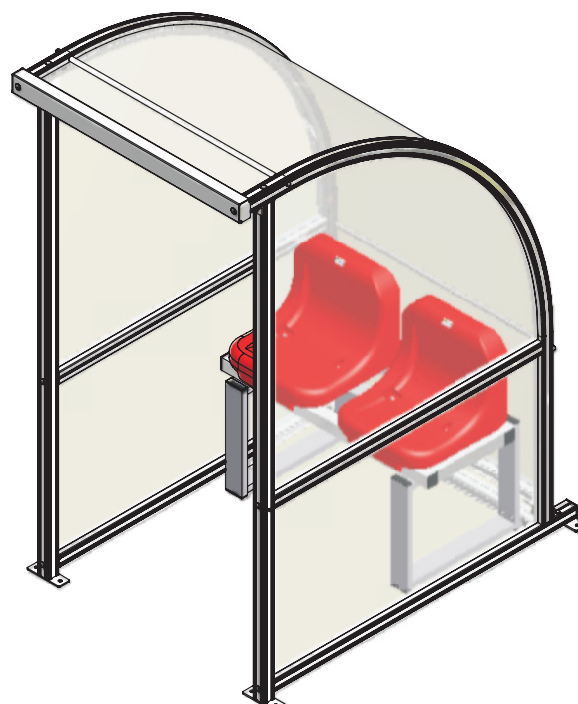
This shelter must be assembled on a flat surface. Failure to do this may result in bolt hole misalignment.

When the shelter is fully assembled it must be anchored to prevent movement and toppling. Please see page 6 or speak to your distributor for anchoring options.

Please read these assembly instructions carefully before starting to assemble your shelter.

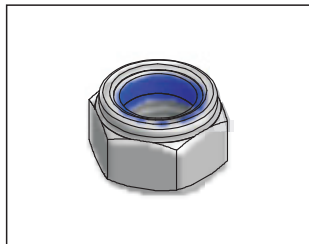
TOOLS REQUIRED

1 x T-Handle Nut Driver (included)
 1 x Ratchet with 13mm socket
 1 x Rubber Mallet
 2 x 13mm Spanners
 1 x Phillips HD Screw Driver/Drill Bit
 Silicone Based Lubricant/Fairy Liquid

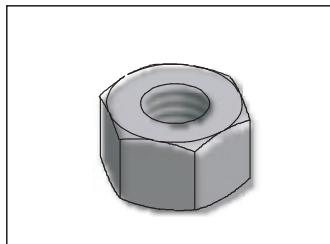


Parts Identification

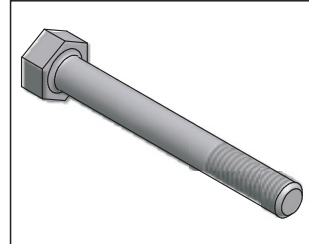
12. (BOL402)



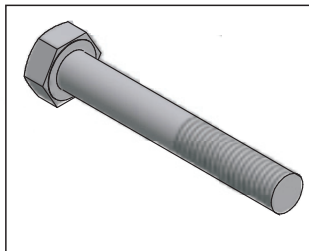
13. (BOL400)



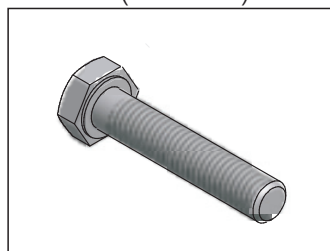
14. (BOL442)



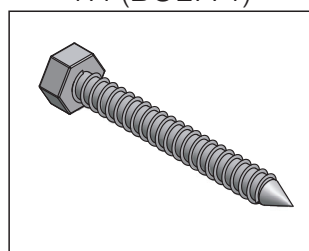
15. (BOL472)



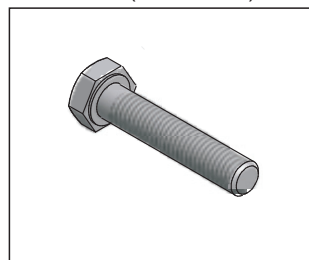
16. (BOL520)



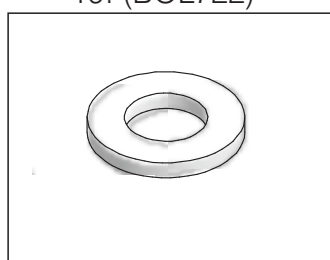
17. (BOL771)



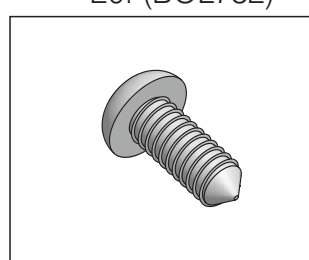
18. (BOL546)



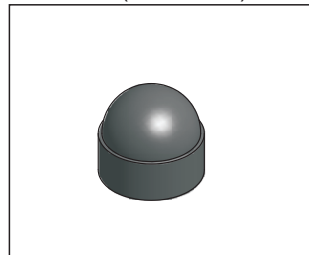
19. (BOL722)



20. (BOL782)



21. (CAP951)



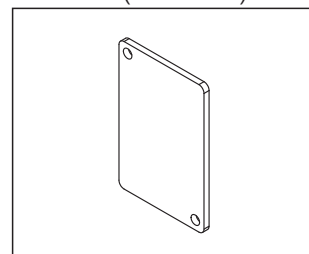
22. (CAP095)



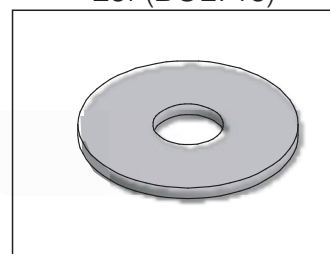
23. (FAS005)



24. (PEP050)



25. (BOL715)



Assembly Instructions

IMPORTANT

All bolts should be hand tightened where possible, until the shelter has been fully assembled, then fully tighten.

1.) Attach the backbar (4) by sliding in-between the brackets on the sideframes and line up the holes. You will need 3 people for this as the sideframes need to be held with the uprights face down on the floor, as shown in Figure 2. When the backbar is in position, use 2 x BOL472 (15) to attach to the sideframes (Figure 1). Fix with a plastic washer both sides (19) and a nylock nut (12).

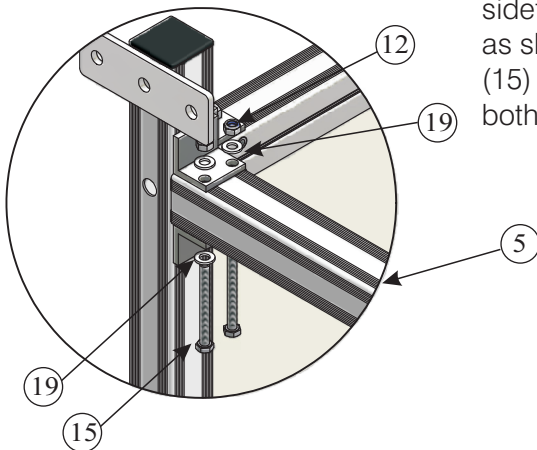


Figure 1.

2.) Attach the back support (7) between the sideframes (1&2) by attaching with 4 x BOL546 (18) and a skiffy washer (19) (Figure 3). Line up the angle brackets on the back support with the rivet nuts on the sideframe. Make sure that the bolts are only finger tight so that there is still some movement on the bracket.

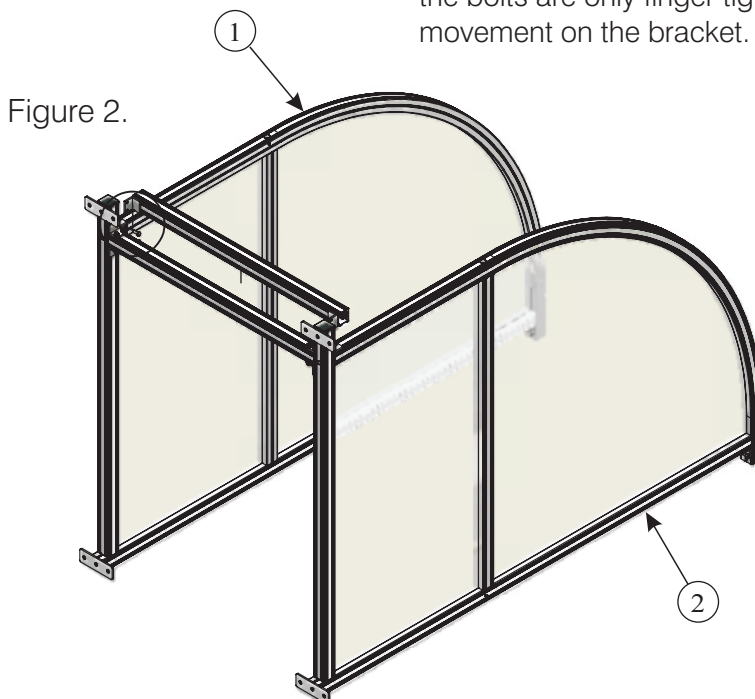


Figure 2.

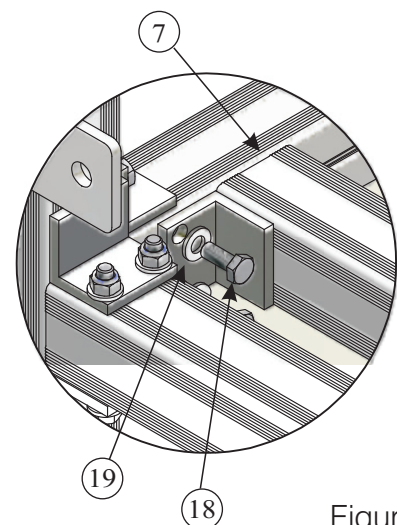


Figure 3.

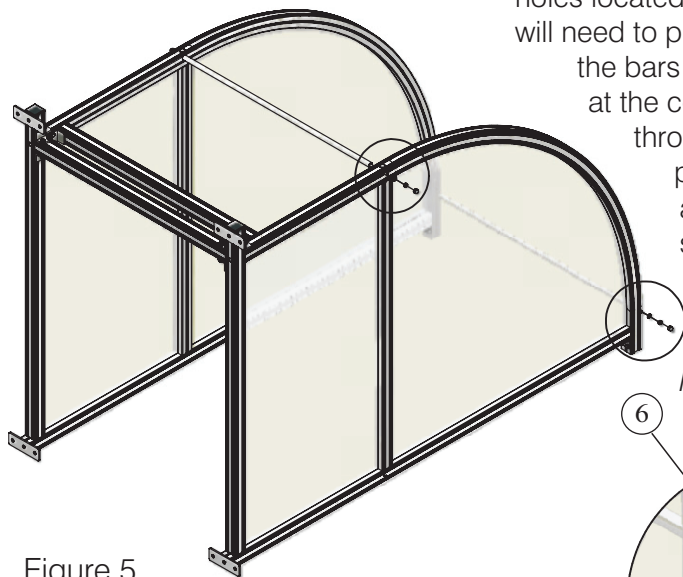


Figure 5.

5.) Attach the retaining bars (6) from one side, sliding through the holes located in the sideframes. This will require 2 people as one will need to push the bars through while the other will need to slide the bars through the retaining tubes (8) to space the sections at the correct length (Figure 5). Once the retaining bar is through both sideframes there should be approx 15mm protruding either side. This allows the bar to be fixed and tightened at each end. This is done by placing a skiffy washer (19) on first and then fixing with BOL400 (13). Hand tighten this at first as you will need to allow movement between the sideframes when fitting the plastic later.

Note: CAP951 (21) need to be fitted once the retaining bars have been tightened and the shelter is complete (Figure 6).

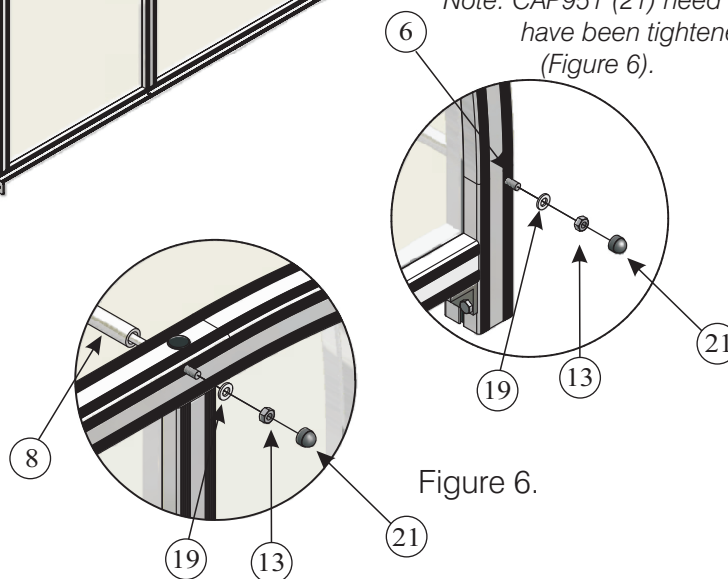


Figure 6.

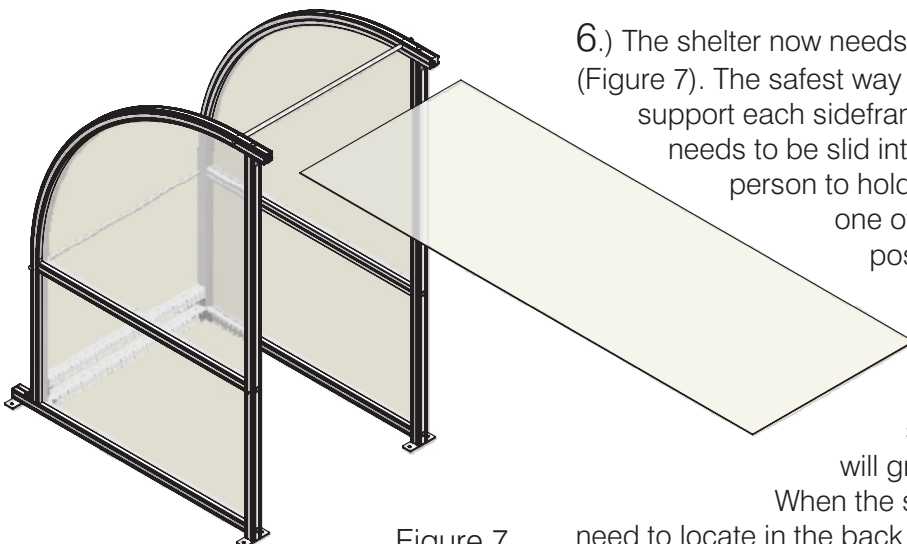


Figure 7.

6.) The shelter now needs to be lifted into the upright position (Figure 7). The safest way to do this is to have one person support each sideframe. At this point the back sheet (9) needs to be slid into place. This is a 2/3 person task, one person to hold and support the weight of the sheet, one other to guide and push the sheet into position whilst one other person pulls the sheet down into position. The sheet needs to slide into the recess of the extrusion of the bent supports, where the rubber is located. the sheet must slide in square, otherwise it will grip on the rubber and will not slide in.

When the sheet is fully in place the bottom will need to locate in the back support (7). *Note: Use silicone spray to help lubricate the rubber.*

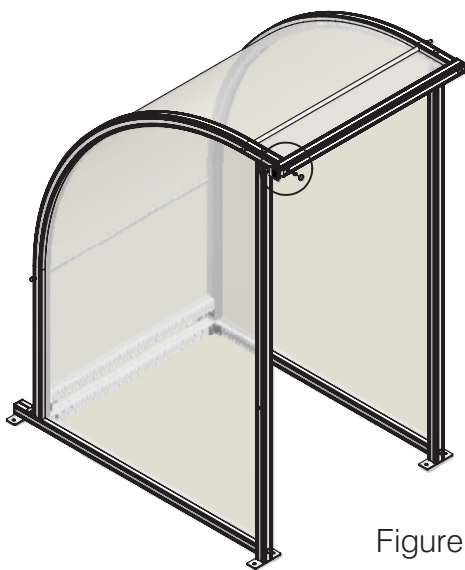
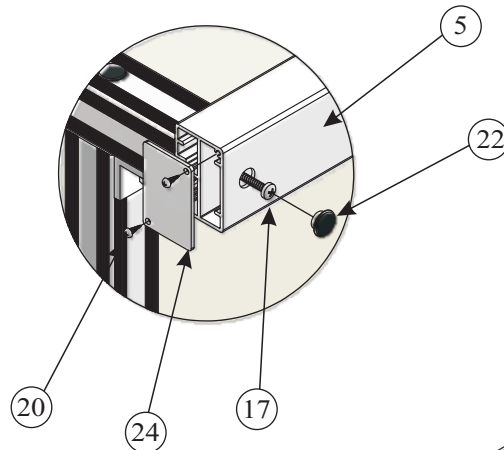


Figure 8.

7.) Once the plastic is in place the crossbar (5) need to be fixed into position. Attach the crossbar using the self tapping screws (17) by locating the holes in the crossbar and lining those holes up with the screw port in the extrusion in the bent supports (Figure 8). To do this you will need a 10mm deep drive socket/T-Handle nut driver (23). Finish it off by inserting the round caps (22) into the front of the crossbar and the end caps (24) in either end of the crossbar by using the 10g self tapping screws (20) (Figure 12)



8.) Once the main frame is assembled the seats need to be installed. First attach the seat supports by inserting 2 x BOL520 (15) through the holes in the seat support frame (11) and into the backbar (4) with a STST washer (25) (Figure 9).

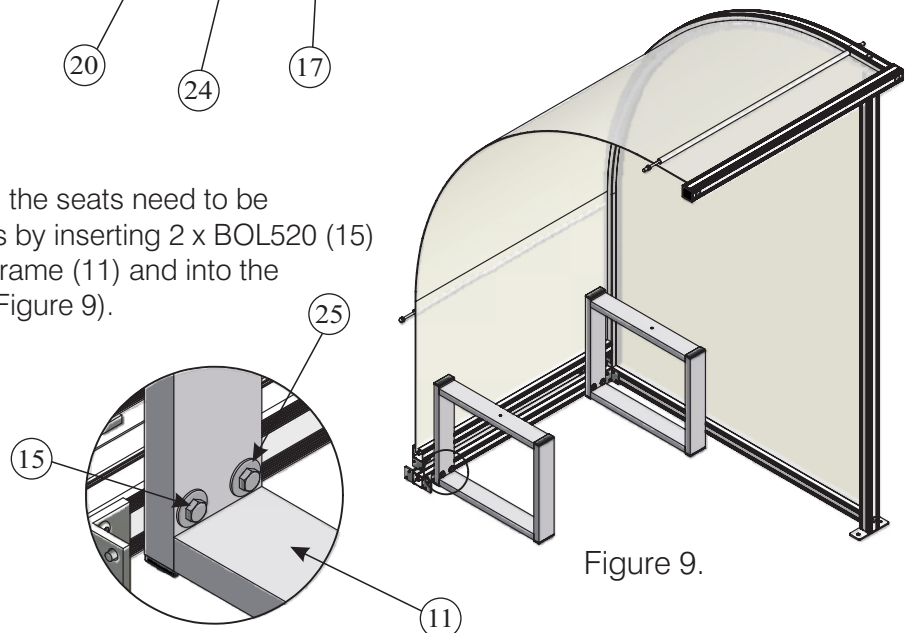
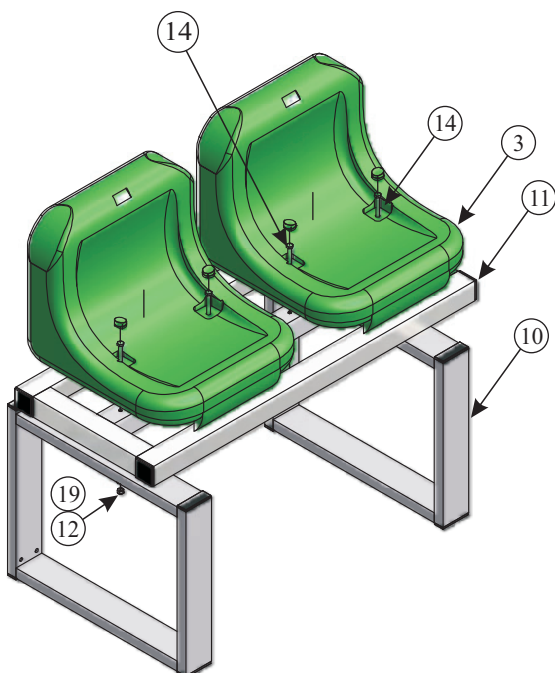


Figure 9.

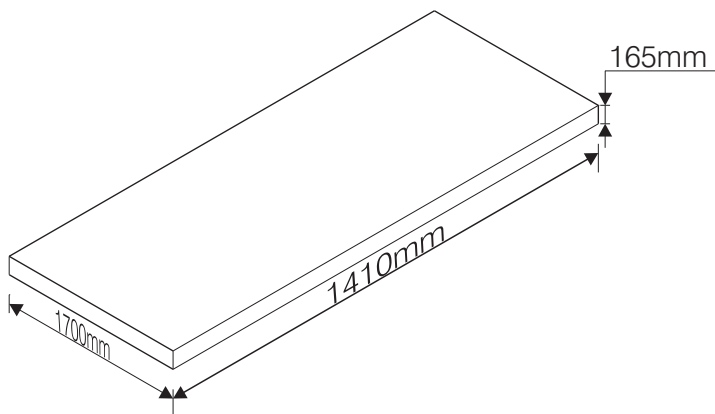


9.) Install the seats (3) by attaching them to the horz seat support (10) and then attach these to the seat support frames (11). Use BOL442 (14) to attach the seat through both supports and frames then use BOL472 (15) to attach the seat to the horz seat support. Fix underneath using a skiffy washer (19) and an M8 Nylock nut (12). Finish the seats off by inserting the seat caps. These will need to be knocked in firmly using a rubber mallet.

Code: SHE-040/043/045

Product: Premier Curved Team Shelter

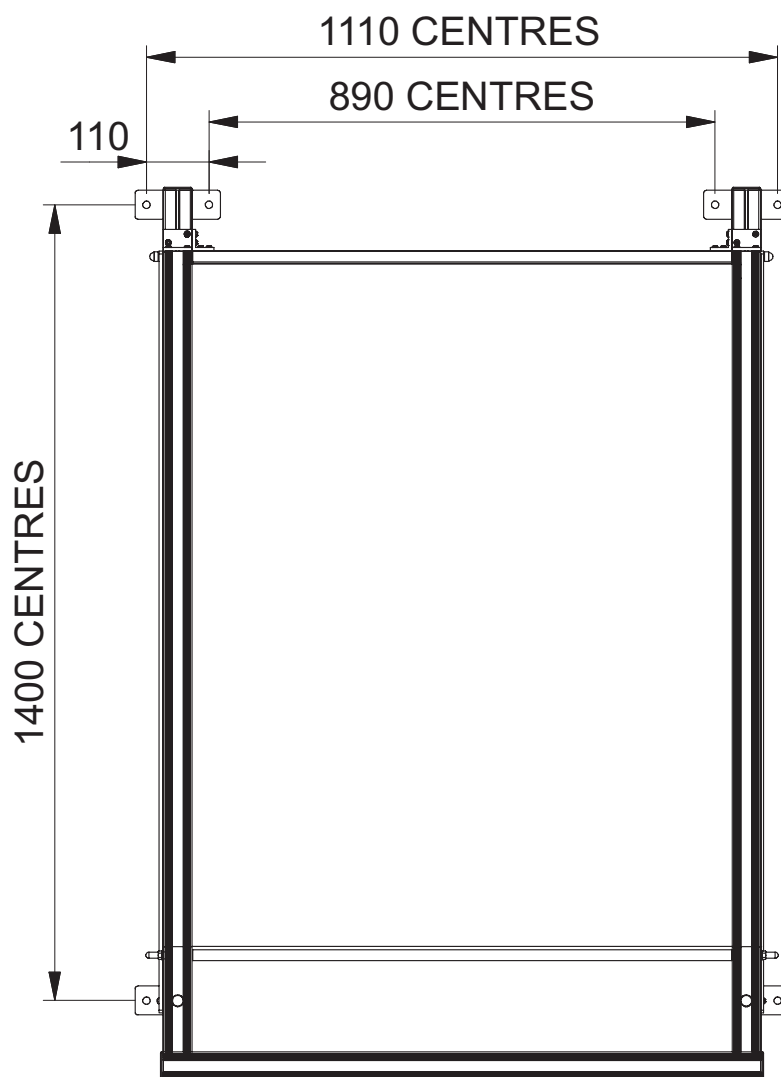
Foundation Installation



- 1.) Dig a hole to the dimensions shown.
- 2.) Fill the hole with concrete and level. Wait until the concrete is fully cured before fixing down the shelter.

Anchor Point Dimensions

Plan view of 1m Shelter



Anchoring options:
ANC-010: Expanding Anchor Bolt Set Per 7
ANC-025: Chemi - Bolt Set Per 7