

Pack Contents:

IMPORTANT PLEASE READ THE ASSEMBLY INSTRUCTIONS CAREFULLY BEFORE STARTING TO ASSEMBLE YOUR GOAL

Tools Required

- 2 x 17mm Spanners
- 1 x Pair Scissors
- 1 x Mallet
- 1 x Step Ladder

Maintenance note: To ensure maximum manoeuvrability of the weighted back bar, it is recommended to clean out any build-up of debris from the rollers and bushes every 6 months. Remove the roller as per Step 6 but in reverse order. Grease roller for improved performance.

For information on goal post maintenance and inspection please refer to "The FA Football Goals - Guidance Notes (July 2006)", available for download at www.thefa.com.

FBL-545 4.88x2.13m 3G Weighted Portagoal

1. 2 x FEP378 4.88m Crossbar
2. 2 x FEP286 2.13m Upright (*pair*)
3. 2 x FEP402 2386mm Sidebar (*pair*)
4. 4 x PEP291 Jnr Net Support (*packed in 2xFEQ291*)
5. 4 x PEQ336 Net Support Brace (*packed in 2xFEQ291*)
6. 2 x FEQ377 4.88m Axle Bar
7. 2 x PEQ712 4.88m Net Bar (*packed in 1xFEQ807*)
8. 16 x STE029 600mm Roller (*packed in 4xFEQ307*)
9. 1 x FPK805 4.88x1.83/2.13m Fittings Pack (*see next page*)
10. 2 x FEQ512 4.88m Axle Ballast Tube

FBL-654 4.88x1.83m 3G Weighted Portagoal

1. 2 x FEP378 4.88m Crossbar
2. 2 x FEP288 1.83m Upright (*pair*)
3. 2 x FEP401 1989mm Sidebar (*pair*)
4. 4 x PEP292 1.83m Net Support (*packed in 2xFEQ292*)
5. 4 x PEQ336 Net Support Brace (*packed in 2xFEQ292*)
6. 2 x FEQ377 4.88m Axle Bar
7. 2 x PEQ712 4.88m Net Bar (*packed in 1xFEQ807*)
8. 16 x STE029 600mm Roller (*packed in 4xFEQ307*)
9. 1 x FPK805 4.88x1.83/2.13m Fittings Pack (*see next page*)

FBL-655 3.66x1.83m 3G Weighted Portagoal

1. 2 x FEP363 3.66m Crossbar
2. 2 x FEP288 1.83m Upright (*pair*)
3. 2 x FEP401 1989mm Sidebar (*pair*)
4. 4 x PEP292 1.83m Net Support (*packed in 2xFEQ292*)
5. 4 x PEQ336 Net Support Brace (*packed in 2xFEQ292*)
6. 2 x FEQ378 3.66m Axle Bar
7. 2 x PEQ713 3.66m Net Bar (*packed in 1xFEQ808*)
8. 12 x STE029 600mm Roller (*packed in 3xFEQ307*)
9. 1 x FPK806 3.66x1.83m Fittings Pack (*see next page*)

FBL-644 4.88x1.22m 3G Weighted Portagoal

1. 2 x FEP378 4.88m Crossbar
2. 2 x FEP290 1.22m Upright (*pair*)
3. 2 x FEP400 1379mm Sidebar (*pair*)
4. 4 x PEP293 1.22m Net Support (*packed in 2xFEQ293*)
5. 4 x PEQ328 Net Support Brace (*packed in 2xFEQ293*)
6. 2 x FEQ377 4.88m Axle Bar
7. 2 x PEQ712 4.88m Net Bar (*packed in 1xFEQ807*)
8. 16 x STE029 600mm Roller (*packed in 4xFEQ307*)
9. 1 x FPK805 4.88x1.83/2.13m Fittings Pack (*see next page*)

FBL-645 3.66x1.22m 3G Weighted Portagoal

1. 2 x FEP363 3.66m Crossbar
2. 2 x FEP290 1.22m Upright (*pair*)
3. 2 x FEP400 1379mm Sidebar (*pair*)
4. 4 x PEP293 1.22m Net Support (*packed in 2xFEQ293*)
5. 4 x PEQ328 Net Support Brace (*packed in 2xFEQ293*)
6. 2 x FEQ378 3.66m Axle Bar
7. 2 x PEQ713 3.66m Net Bar (*packed in 1xFEQ808*)
8. 12 x STE029 600mm Roller (*packed in 3xFEQ307*)
9. 1 x FPK804 3.66x1.22m Fittings Pack (*see next page*)

FBL-646 2.44x1.22m 3G Weighted Portagoal

1. 2 x FEP354 2.44m Crossbar
2. 2 x FEP290 1.22m Upright (*pair*)
3. 2 x FEP400 1379mm Sidebar (*pair*)
4. 4 x PEP293 1.22m Net Support (*packed in 2xFEQ293*)
5. 4 x PEQ328 Net Support Brace (*packed in 2xFEQ293*)
6. 2 x FEQ494 2.44m Axle Bar
7. 2 x PEP809 2.44m Net Bar (*packed in 1xFEQ809*)
8. 8 x STE029 600mm Roller (*packed in 2xFEQ307*)
9. 1 x FPK807 2.44x1.22m Fittings Pack (*see next page*)
10. 2 x FEP392 1220mm 50mm Solid Bar HKY&FBL

FBL-656 3x2m Weighted Futsal Goal

1. 2 x FEP407 3204mm WTD Futsal Crossbar
2. 2 x FEP406 1982mm Weighted Futsal Upright (*pair*)
3. 2 x FEP405 Futsal Weighted Sidebar (2043) (*pair*)
4. 4 x PEQ097 Futsal Net Supports (*packed in 2xFEQ097*)
5. 4 x PEQ336 Net Support Brace (*packed in 2xFEQ097*)
6. 1 x FEQ408 3.182m Axle Bar (*pair*)
7. 2 x PEQ409 2.985m Net Bar (*packed in 1xFEP409*)
- 8a. 8 x STE028 747mm Roller (*packed in 4xFEP311*)
9. 1 x FPK656 WTD Futsal Goal Fittings Pack
10. 4 x FEP392 1220mm 50mm Solid Bar HKY&FBL
11. 2 x FEP394 560mm 50mm Solid Bar Futsal

FBL-652 5x2m Weighted Goal

1. 2 x FEP396 5m 3G Crossbar
2. 2 x FEP406 1982mm Weighted Futsal Upright (*pair*)
3. 2 x FEP405 Futsal Weighted Sidebar (2043) (*pair*)
4. 4 x PEQ097 Futsal Net Supports (*packed in 2xFEQ097*)
5. 4 x PEQ336 Net Support Brace (*packed in 2xFEQ097*)
6. 2 x FEQ398 WTD Axle Bar 5182mm Axle Bar
7. 2 x PEP397 2.985m Net Bar (*packed in 1xFEP397*)
8. 14 x STE029 600mm Roller (*packed in 3.5xFEQ307*)
- 8a. 2 x SEP028 747mm Roller (*packed in FEQ311*)
9. 1 x FPK805 4.88x1.83/2.13m WTD P/G Fittings Pack
10. 8 x 1220mm 50mm Solid Bar HKY&FBL

Code: FBL-545/654/655/644/645/646/656

Product: 3G Aluminium Weighted Portagoal

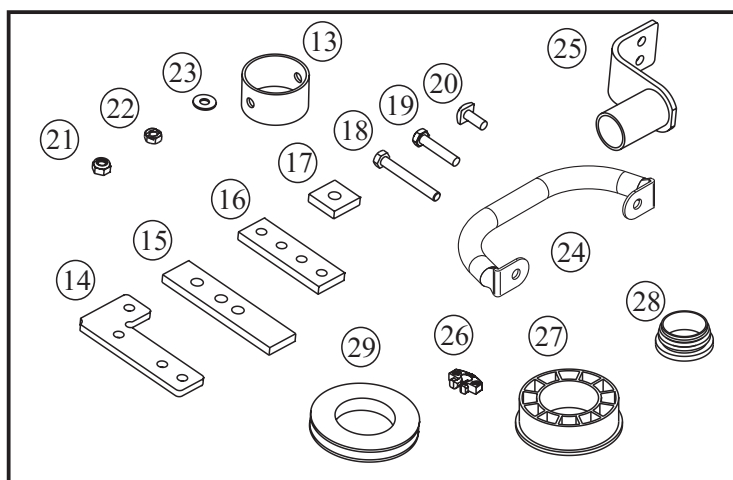
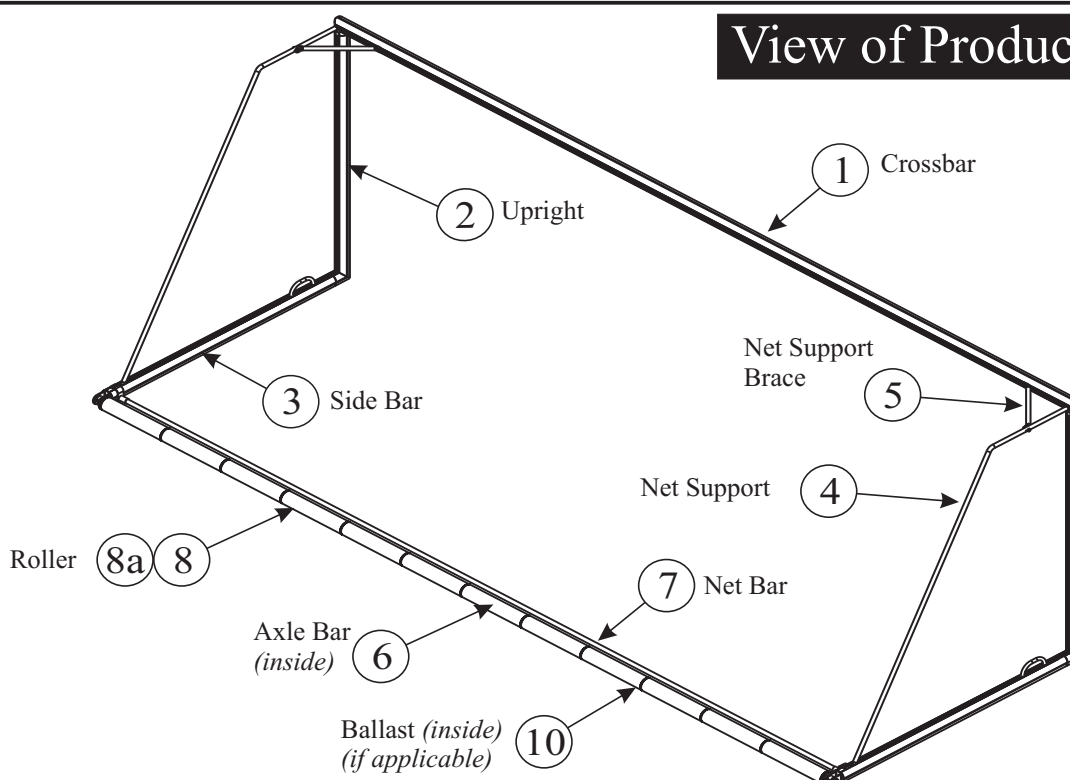
This product is protected by © Copyright
and Design Right Harrod UK Ltd 2003.

Fittings Pack Contents:

Fittings Pack Contents Quantity per pack:

		FPK804	FPK805	FPK806	FPK807	FPK656
13.	70mm Diameter Collar. (PEQ511)	4	4	4	4	4
14.	155x75x8mm 'L' Plate. (PEP416)	4	4	4	4	4
15.	160x38x10mm Plate. (PEQ485)	4	4	4	4	4
16.	120x38x10mm Plate. (PEP299)	4	4	4	4	4
17.	38x38x10mm Plate. (APP150)	12	12	12	12	12
18.	M10 x 80mm Hex Bolt. (BOL280)	4	4	4	4	4
19.	M10 x 50mm Hex Bolt. (BOL306)	4	4	4	4	4
20.	M10 Square Head Bolt. (BOL336)	44	44	44	44	44
21.	M10 BZP Nyloc Nut. (BOL202)	52	52	52	52	52
22.	M10 Binx Nut (BOL201)	12	12	12	12	12
23.	10mm Washer. (BOL709)	56	56	56	56	56
24.	Portagoal Handle (PEP499)	4	4	4	4	4
25.	Net Bar Bracket (PEQ375)	4	4	4	4	4
26.	Euro Post Hook. (HKS029)	72	100	88	64	80
27.	Plastic Axle Bush. (PLA120)	24	32	24	16	16
28.	60.3mm Axle Cap (CAP316)	4	4	4	4	4
29.	Plastic Slim Axle Bush. (PLA121)	2	2	2	2	2

View of Product



Code: FBL-545/654/655/644/645/646/656

Product: 3G Aluminium Weighted Portagoal

This product is protected by © Copyright
and Design Right Harrod UK Ltd 2003.

Assembly Instructions

Please Note: For safety reasons, It is recommended that two or more people assemble this goal and it should take 1 hour per goal. Identify the product that you have purchased and refer to the correct pack contents.

1 Crossbar and Uprights - Lay the Crossbar and Uprights on the ground with the slots facing upwards and Slide 3 Square Head Bolts into the slots at both ends of the Crossbar, and 2 Square Head Bolts into the end of each Upright. Fit together using 'L' Plate, washers and bolts as shown in Fig 1.

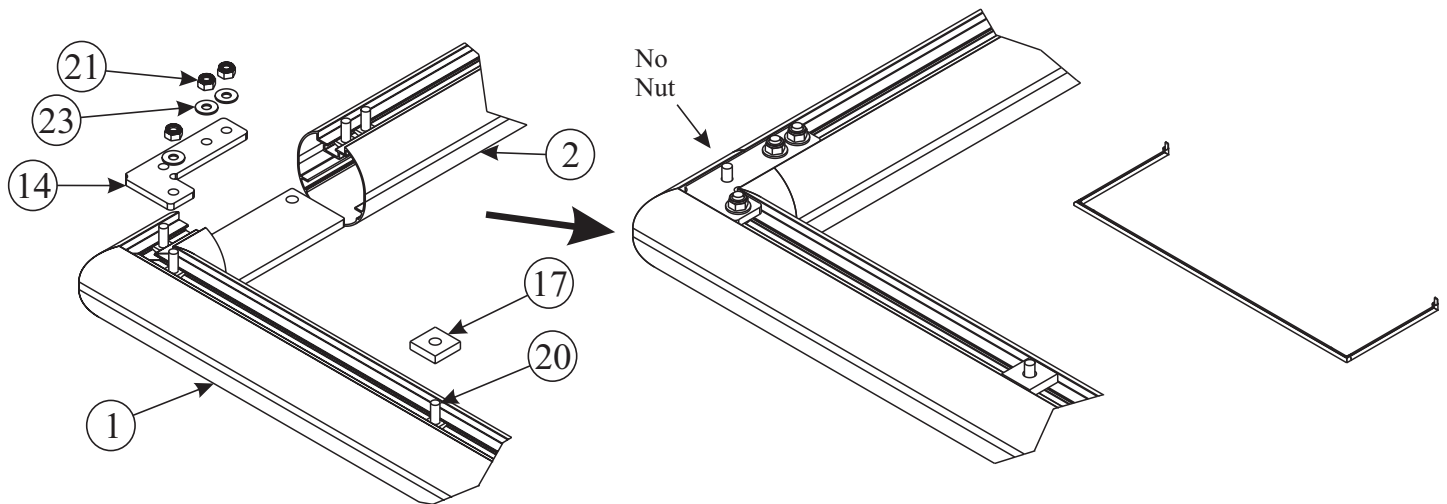


Fig 1 Exploded

Assembled Corner Detail

Whole Goal

2 Assemble Sidebars - Fit parts as shown to the Sidebars with the Handle being securely tightened and the other 2 Plates being hand tight only. Tighten one of the Nuts on the plate with 4 holes so that the Plate doesn't move.

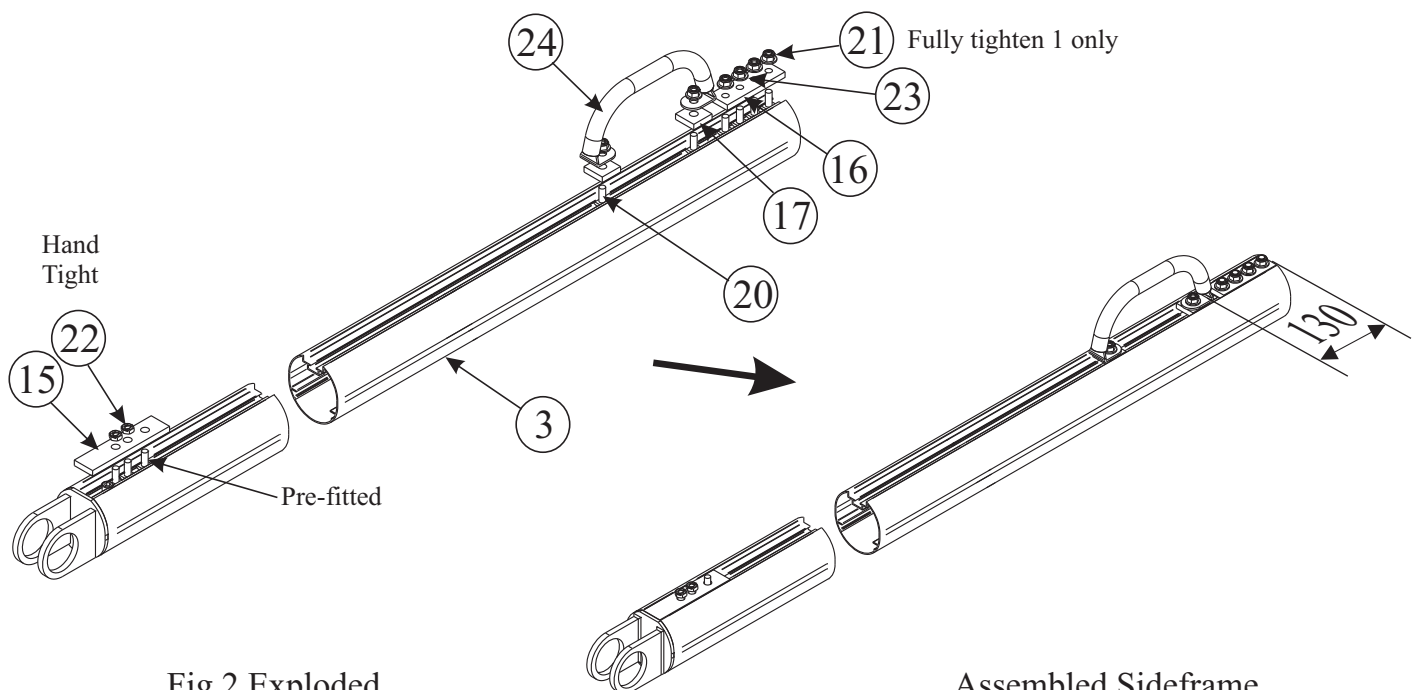


Fig 2 Exploded

Assembled Sideframe

Code: FBL-545/654/655/644/645/646/656

Product: 3G Aluminium Weighted Portagoal

This product is protected by © Copyright
and Design Right Harrod UK Ltd 2003.

3 Fit Sidebars - Important: This next step must be done by 2 competent adults. Lift the Side Bar on to the Upright and slide down over the exposed plate as shown in Fig 3. Loosen the tight bolt on the plate and slide the plate assembly over the joint. Tighten all bolts to secure the joint. Keep supporting the Side Bar and carry out step 4&5 before assembling other Side Bar.

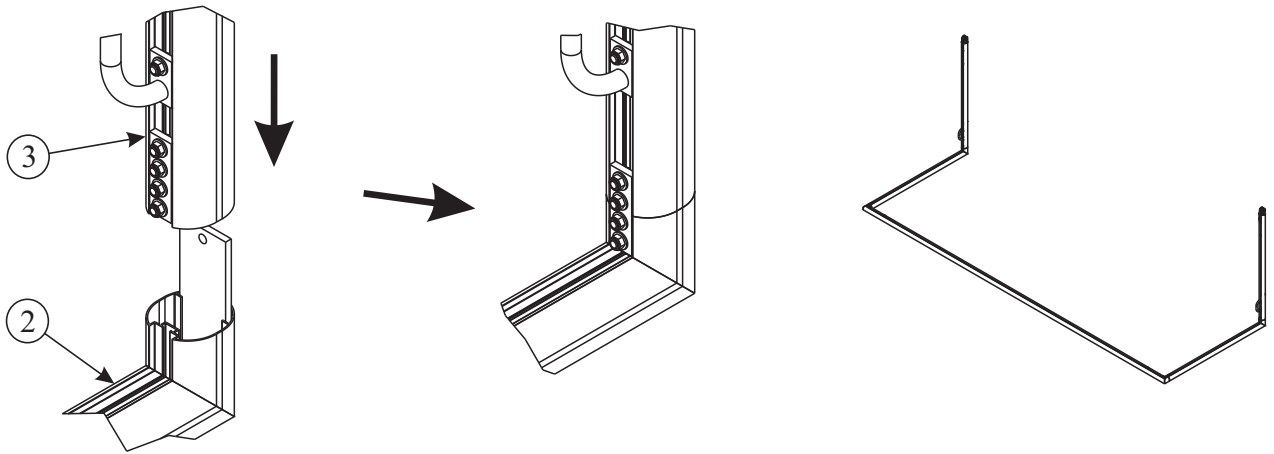


Fig 3 Exploded

Assembled Corner Detail

Whole Goal

4 Attach the Net Supports - Position and fit the Net Support to the unused bolt on the corner joint. fit the Brace ensuring that the Net Support is square before tightening the Bolts.

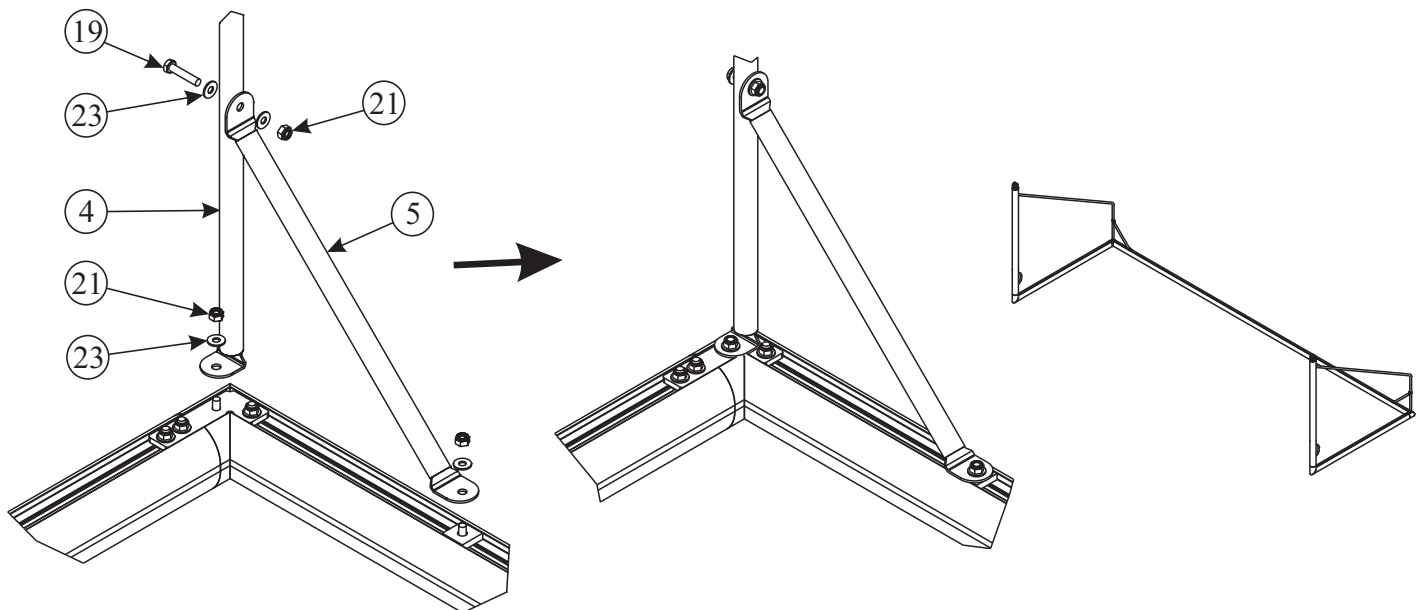


Fig 4 Exploded

Assembled Corner Detail

Whole Goal

5 Attach the Net Supports - Fit the other end of the net support to the unused Bolt on the Side Bar. Hand tighten only, these can be secured later, when the goal has been lifted into the upright position. Repeat from step 3 for other Net Support.

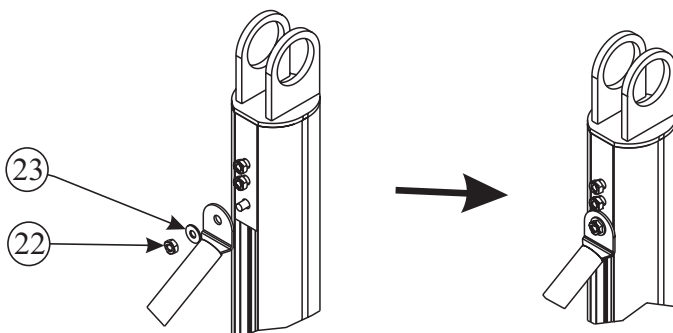


Fig 5 Exploded

Assembled Detail

Whole Goal

Tip for fitting Net: You may either fit the net when the whole goal is complete or start fitting the net to the Crossbar and Uprights at this stage to avoid using step ladders later. For guidance on net hook spacing, see notes on last page titled, Fitting The Net.

Code: FBL-545/654/655/644/645/646/656

Product: 3G Aluminium Weighted Portagoal

6 Assemble the Roller - Fit one end of the Axle bar to a Side Bar as follows: Position a Collar in between the Axle Bracket Lugs on one of the Side Bar Assemblies and Insert the Axle Bar. Lock the end in place with an 80mm Bolt and Nut. Slide on a Plastic Axle Bush inserted into the ends of each Roller Tube, slide over the open end of the Axle Bar. Repeat for the other Rollers until you reach the middle where a slim axle bush will be required, slide this onto the axle bar before sliding the remaining rollers on. If Ballast Tubes are supplied with your goal, fit these now into the Axle and secure the Axle in place using the Collar and Bolts. Using a mallet, fit the End Caps into the ends on the Axle.

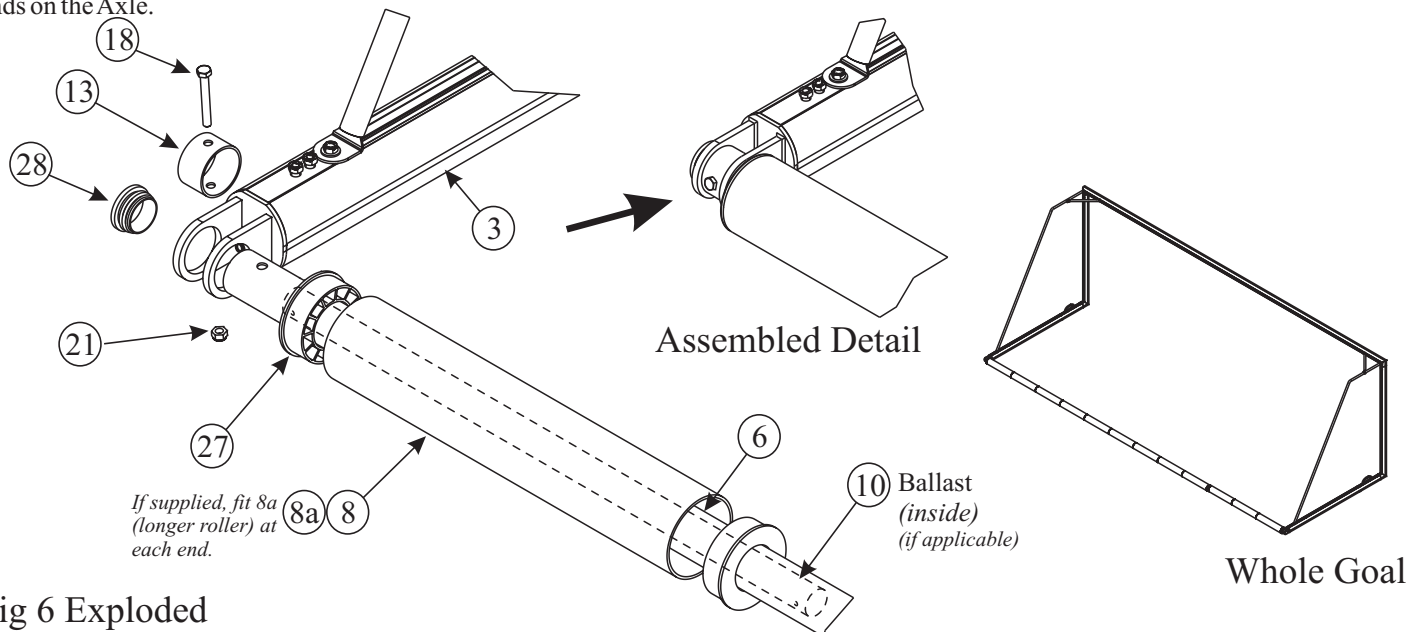


Fig 6 Exploded

7 Attach the First Net Bar Bracket - Remove the Hand tight Binx Nuts, position one Net Bar Bracket and re-fit nuts (do this at one end only).

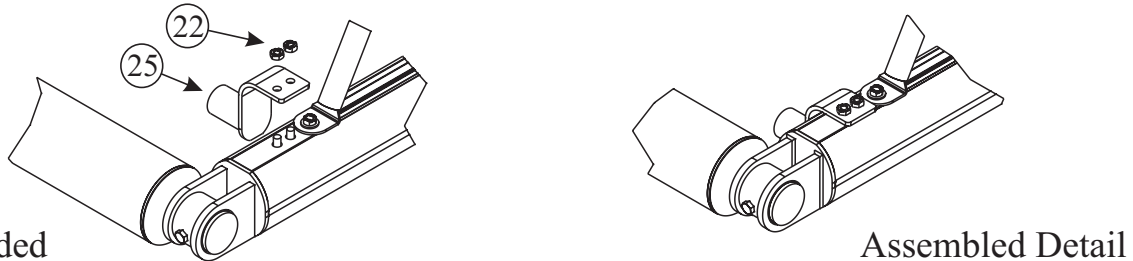


Fig 7 Exploded

Fitting The Net

(Supplied Separately)

1 Identify the edge to be fitted to the Crossbar, this will be marked with a label. Attach the hooks to the net, then insert the hook into the slot on the goal section and twist to lock. Space each net hook approx 250mm apart. Tie the headline to the top corner of the Net Support to stop the roof of the net from sagging.

2 Attach the net at the bottom by threading the bar through alternative meshes on the last row of the net. Insert the bar into the bracket and secure as described in step 7.

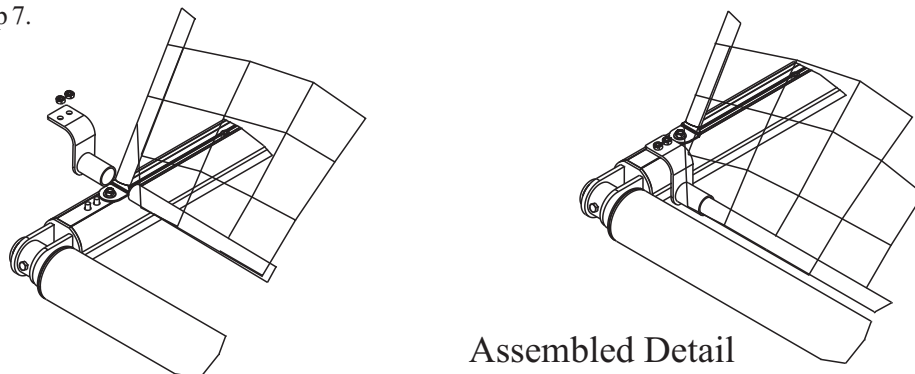


Fig 8 Exploded

Operating Instructions

The Backbar acts as a Roller so that the Goal can be manoeuvred by handles.

Lift both handles at the same time and roll the goal into position.