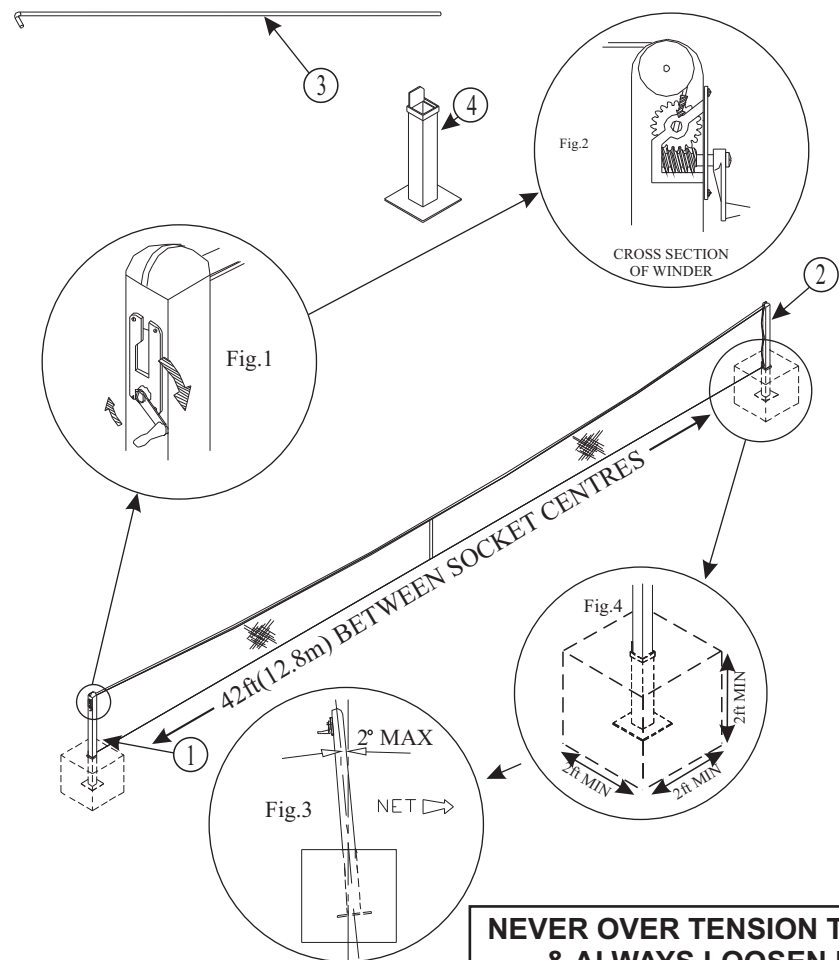


Pack Contents:

- 1. 1 x Winder Post (PEQ871)
- 2. 1 x Dummy Post (PEQ870)
- 3. 2 x Net retaining rod (SPE837)
- 4. 2 x Sockets (PEQ872)

Please read all of the assembly instructions fully before you begin to install your posts.

View of Product

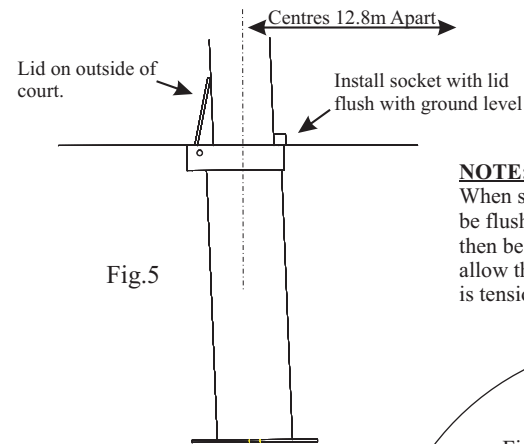


NEVER OVER TENSION THE NET & ALWAYS LOOSEN NET TENSION WHEN POSTS ARE NOT IN USE

(CHANGE IN TEMPERATURES CAN CAUSE THE HEADLINE WIRE TO CONTRACT WHICH CAN APPLY TOO MUCH TENSION AND DAMAGE POSTS)
FOR FURTHER ADVICE PLEASE REFER TO THE SAPCA GUIDELINES

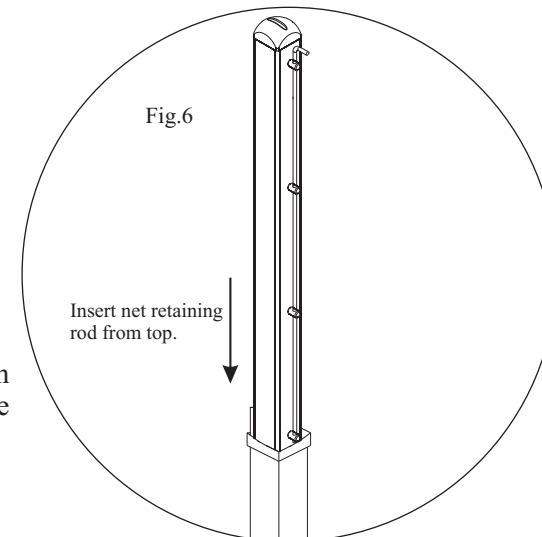
Assembly Instructions

1 We recommend that the sockets are set in a 2ft square cube of concrete, the socket lid closed should be flush with court surface. As shown Fig.4. It is important that the posts are inserted into the sockets BEFORE the concrete is set, to ensure the posts are correct. For this reason the posts should be set leaning slightly outwards. As shown Fig.3 & 5.



NOTE:
When socket is installed, the socket lid must be flush with ground level. The socket will then be sitting back at an angle of 2° to allow the post to be vertical when the net is tensioned.

2 Please note: Do not attach the net until the concrete has set completely.



3 To attach the net, thread the retaining rod through the end of the net and the bosses on the post for a neat, close fit. As shown Fig.6. The correct tension can now be applied by winding the handle clockwise. As shown Fig.1.