

Code: HOC-073/HOC-074/HOC-076

INS074

Revision 3

16/11/15

© Harrod UK Limited

Product: Hockey Sin Bin Seats

Pack Contents

HOC-073 Two Seater Sin Bin Seat

- | | | |
|----|------------------------------------|----------|
| 1. | 1 x 977mm Horizontal Seat Support | (PEP077) |
| 2. | 2 x Seat Support Side Frames | (PEP076) |
| 3. | 2 x Blue Stadium Seat | (PLA044) |
| | 1 x 2 Seater Sin Bin Fittings Pack | (FPK072) |

2 Seater Sin Bin Fittings Pack (contains)

- | | | |
|----|-----------------------------------|----------|
| 4. | 8 x M8 Nylock Nut BZP | (BOL402) |
| 5. | 4 x M8x110mm Hex Bolt BZP | (BOL442) |
| 6. | 4 x M8x80mm Hex Bolt S/S | (BOL472) |
| 7. | 8 x M8x25mm Washer S/S | (BOL715) |
| 8. | 4 x Team Shelter Seat Plug (Blue) | (CAP094) |
| 9. | 4 x M8 Nut Cap | (CAP951) |

HOC-074 Three Blue Seater Sin Bin Seat

- | | | |
|----|-------------------------------------|----------|
| 1. | 1 x 1451mm Horizontal Seat Supports | (PEP075) |
| 2. | 2 x Seat Support Side Frames | (PEP076) |
| 3. | 3 x Blue Stadium Seat | (PLA044) |
| | 1 x Blue Sin Bin Seat Fittings Pack | (FPK074) |

HOC-076 Three Seater Green Sin Bin Seat

- | | | |
|----|--------------------------------------|----------|
| 1. | 1 x 1451mm Horizontal Seat Supports | (PEP075) |
| 2. | 2 x Seat Support Side Frames | (PEP076) |
| 3. | 3 x Green Stadium Seat | (PLA043) |
| | 1 x Green Sin Bin Seat Fittings Pack | (FPK071) |

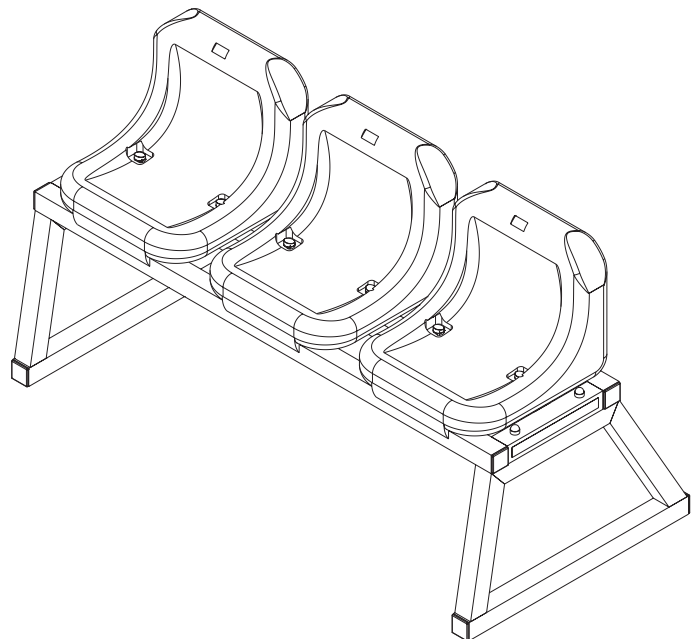
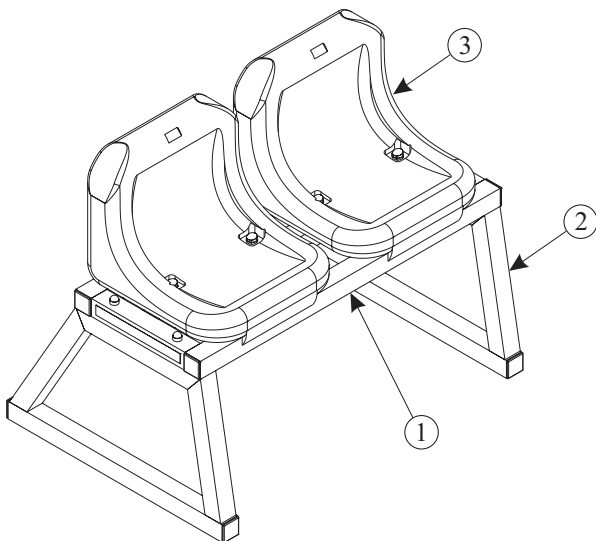
Sin Bin Seat Fittings Pack (contains)

- | | | |
|----|--|--------------|
| 4. | 10 x M8 Nylock Nut BZP | (BOL402) |
| 5. | 4 x M8x110mm Hex Bolt BZP | (BOL442) |
| 6. | 4 x M8x80mm Hex Bolt S/S | (BOL472) |
| 7. | 10 x M8x25mm Washer S/S | (BOL715) |
| 8. | 4 x Team Shelter Seat Plug (Blue/Geen) | (CAP094/093) |
| 9. | 4 x M8 Nut Cap | (CAP951) |

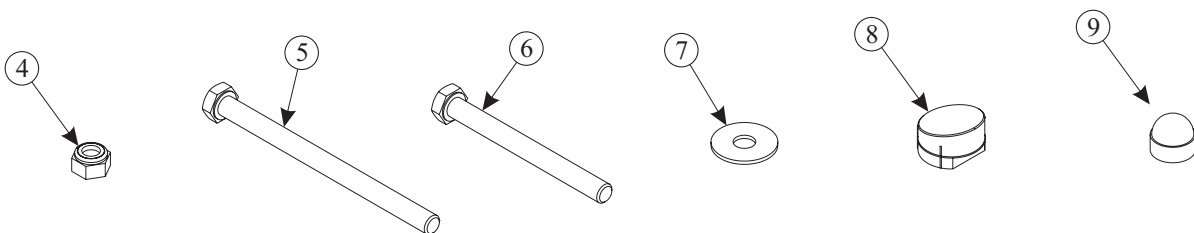
Tools Required

- 2 x 13mm Spanners

View of Product



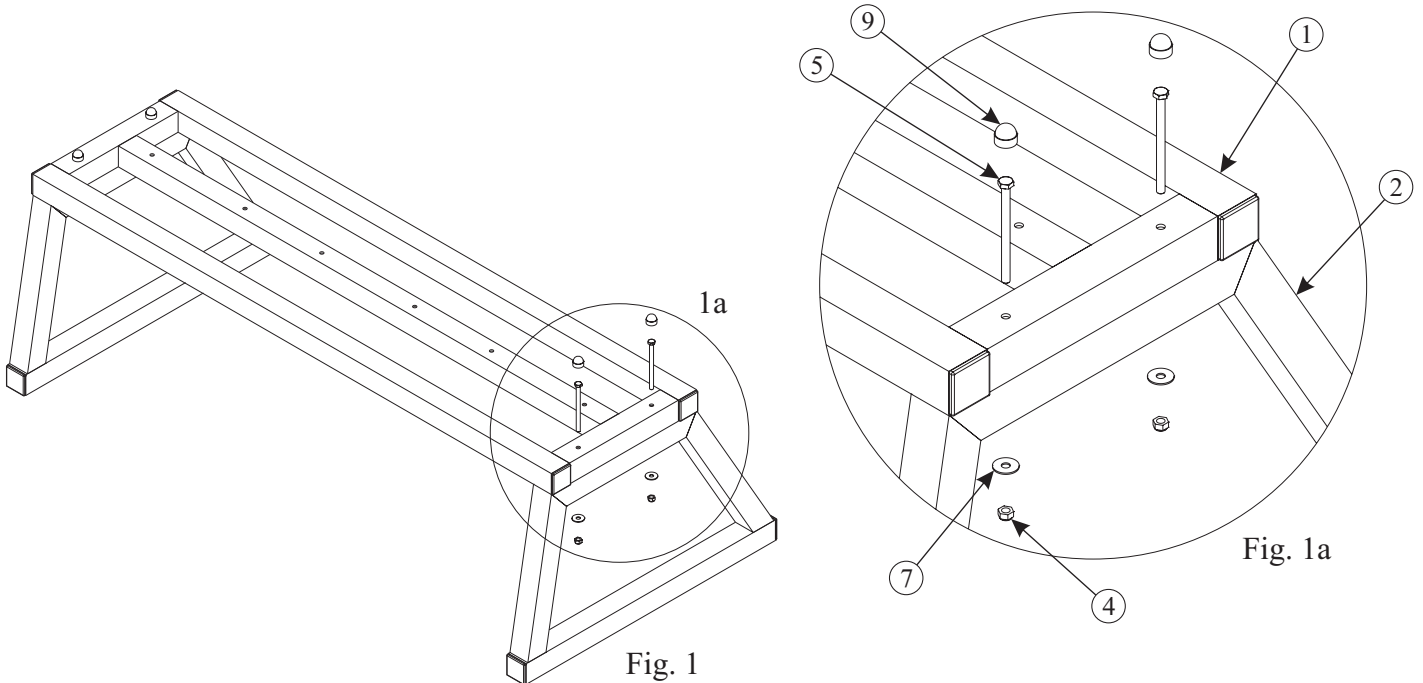
Fittings



**IMPORTANT PLEASE READ THE
ASSEMBLY INSTRUCTIONS
CAREFULLY BEFORE STARTING
TO ASSEMBLE YOUR SEATS**

Assembly Instructions

- 1 Stand Seat Support Side Frames (2) upright and orientate the Horizontal Seat Support (1) on top, as shown in figure 1. Secure the seat support to the uprights using four M8x110mm Hex Bolts (5), four M8x25mm S/S Washers (7) and four M8 Nylock nuts (4), as shown in figure 1a. Cover each exposed hex bolt with an M8 Nut Cap (9).



- 2 Align the Stadium Seats (3) with the corresponding holes in the Horizontal Seat Support (1) as shown in figure 2. Secure the seat using two M8x80mm Hex Bolts (6), two M8x25mm S/S Washers and two M8 Nylock nuts (4) as shown in figure 2a. Cover the exposed hex bolts with Team Shelter Seat Plugs (8) and repeat for the remaining seats.

