

Code: LAC-010, LAC-016

Product: Regulation Lacrosse Goal & Net

INS033

Revision 2

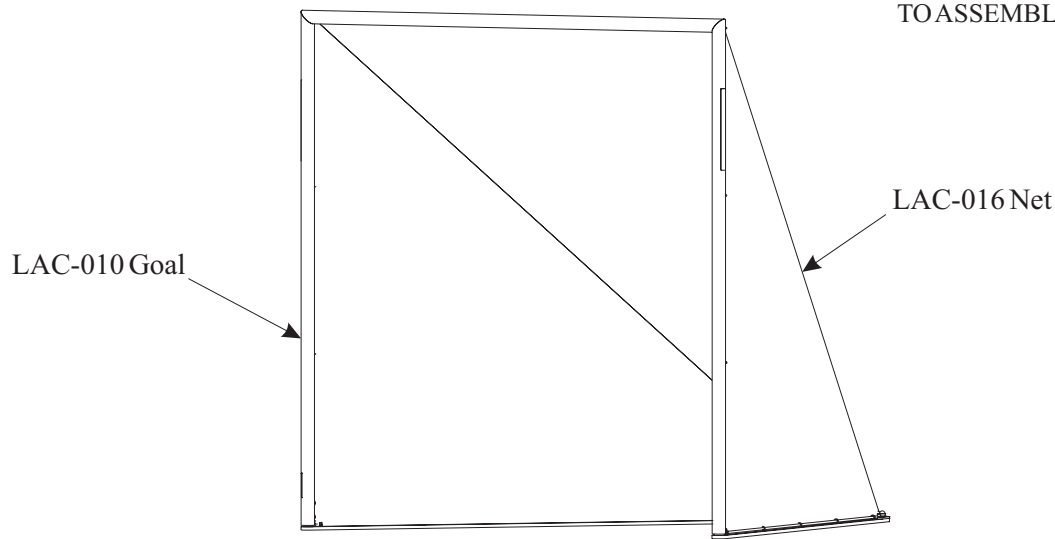
17/05/2018

© Harrod UK Limited

Note: The Goals and Nets are sold separately

View of Product

IMPORTANT PLEASE READ THE ASSEMBLY INSTRUCTIONS CAREFULLY BEFORE STARTING TO ASSEMBLE YOUR GOAL



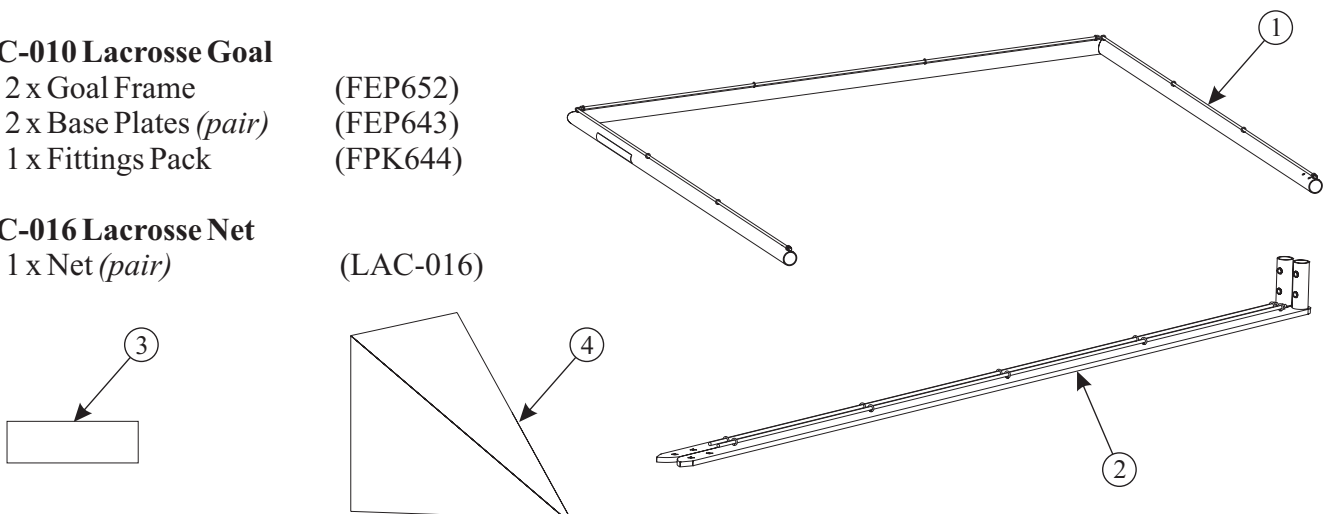
Contents:

LAC-010 Lacrosse Goal

1. 2 x Goal Frame (FEP652)
2. 2 x Base Plates (*pair*) (FEP643)
3. 1 x Fittings Pack (FPK644)

LAC-016 Lacrosse Net

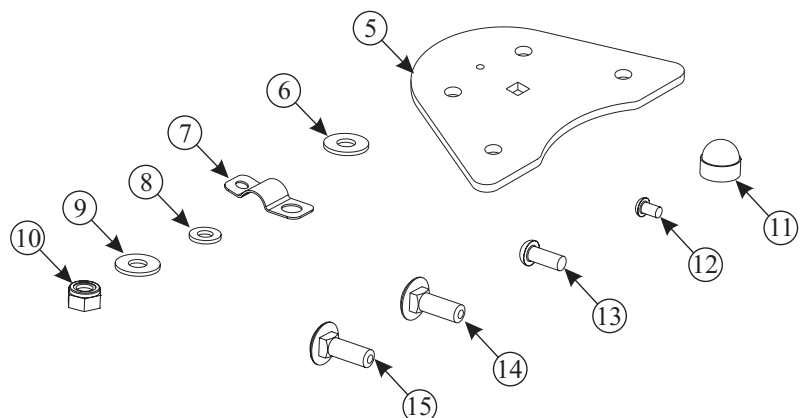
4. 1 x Net (*pair*) (LAC-016)



Fittings Pack :

Fittings Pack

5. 2 x Connector Plate (FPK644)
6. 2 x M10 Washer formB STST (PEP530)
7. 2 x Net Clip (CLP055)
8. 8 x M8 Nylon Washer (BOL722)
9. 8 x M10 STST Washer (BOL709)
10. 10 x M10 Nylock Nut (BOL202)
11. 10 x M10 Nut Cap (CAP950)
12. 2 x M6x10 Button Screw (BOL672)
13. 8 x M8x20 Button Screw (BOL543)
14. 2 x M10x25 Cup Square Bolt (BOL343)
15. 8 x M10x30 Cup Square Bolt (BOL327)



Code: LAC-010, LAC-016

Product: Regulation Lacrosse Goal & Net

Assembly

Tools Required

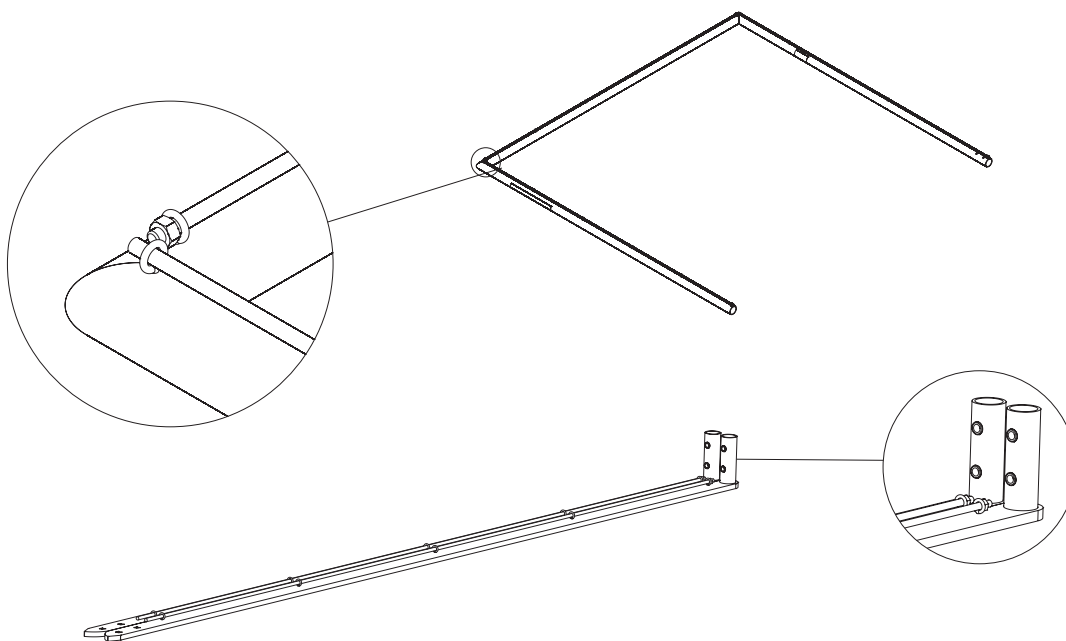
Scissors
17mm Spanner
6mm Allen Key
5mm Allen Key
4mm Allen Key

Assembly Requirements

2 People
30 minutes

1 Using scissors (Do not use a knife), remove all the packaging and Identify the parts using the Pack Contents and Fittings Pack on Page 1.

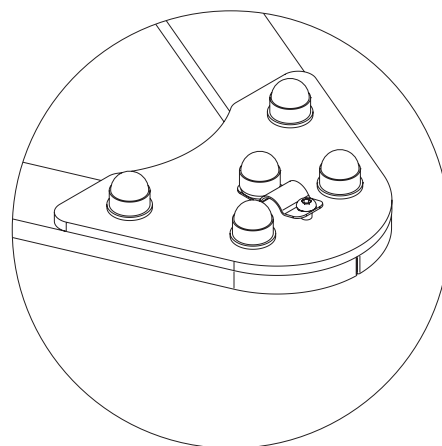
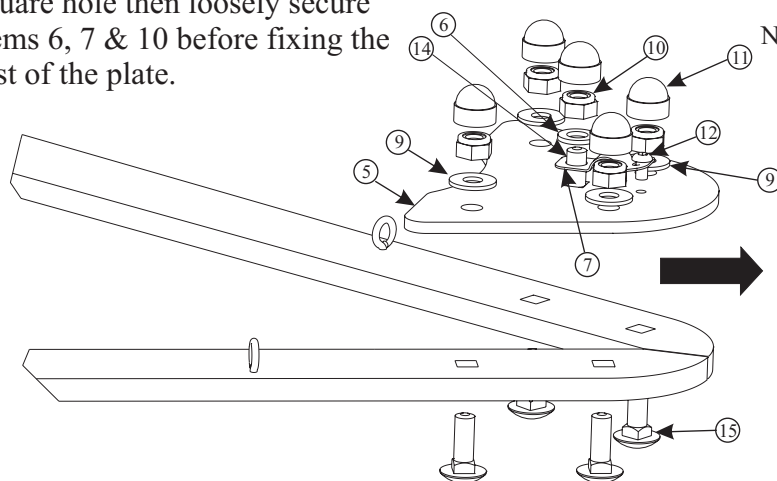
2 Remove all the Net Retaining Rods from the Goal Frame and Base Plates, lay these down remembering where they came from.



3 Connect the Base Plates with the fasteners as shown below.

Place item 14 into the centre square hole then loosely secure items 6, 7 & 10 before fixing the rest of the plate.

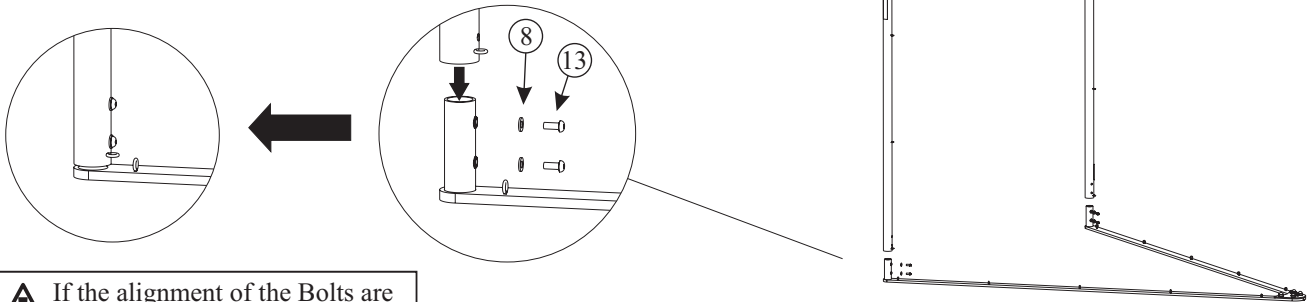
Nut Caps should be left off at this point until after the net is fitted.



Code: LAC-010, LAC-016

Product: Regulation Lacrosse Goal & Net

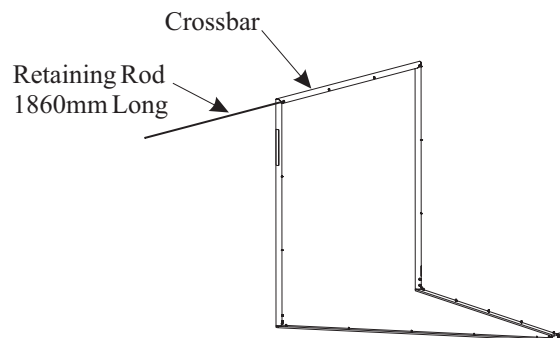
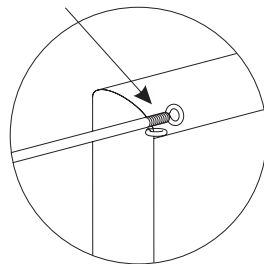
4 Fit the Goal Frame to the Base Plate Spigots - **Caution:-**
2 People are required to safely carry out this step



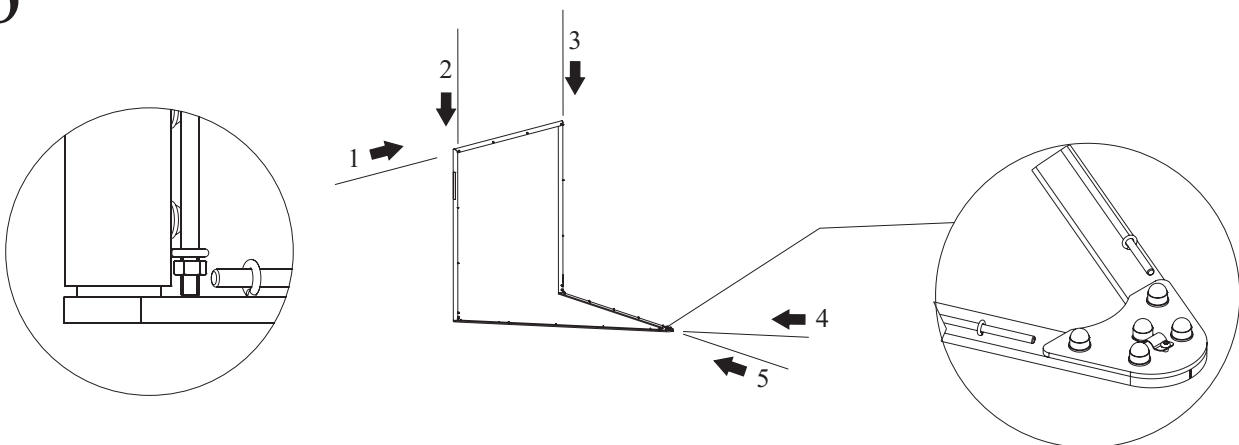
Tip If the alignment of the Bolts are causing problems; lay the Goal Frame down and insert the Base Plate Spigots into the Frame.

5 Fit the Net - The Crossbar Edge of the Net will be labelled. Locate this edge and starting at the top left corner weave the Crossbar Net Retaining Rod in and out of each mesh and through the Eyes on the Crossbar. When the Crossbar has been fully threaded; secure with the M8 Nuts previously removed.

Slide Net Retaining Rod and weave in and out of Net



6 Follow the sequence below to complete the fitment of the net



7 Secure the end of the net with the net clip and secure into place by tightening up the 10mm nylock and screwing in an M6 x 20mm Button Screw.

8 Check the Dimensions of the Goal Frame - If the Goal Frame does not measure the Regulation width of 1.83m at the bottom of the uprights; loosen the M10 Nuts on the Connector Plate hold the uprights at 1.83m and securely tighten the Nuts.